

À des fins de recherche uniquement

Anticorps Polyclonal de lapin anti-PPPDE1/PNAS4



Numéro de catalogue: 20517-1-AP

Phare

7 Publications

Informations de base

Numéro de catalogue:

20517-1-AP

Taille:

150ul, Concentration: 240 µg/ml by Nanodrop and 133 µg/ml by Bradford method using BSA as the standard;

Hôte:

Lapin

Isotype:

IgG

Immunogen Catalog Number:

AG14352

Numéro d'acquisition GenBank:

BC004485

Identification du gène (NCBI):

51029

Nom complet:

PPPDE peptidase domain containing 1

MW calculé

194 aa, 21 kDa

MW observés:

23 kDa

Méthode de purification:

Purification par affinité contre l'antigène

Dilutions recommandées:

WB 1:300-1:600

IP 0.5-4.0 ug for IP and 1:500-1:1000 for WB

IHC 1:20-1:200

IF 1:10-1:100

Applications

Applications testées:

IF, IHC, IP, WB, ELISA

Demandes citées:

IF, IHC, WB

Spécificité de l'espèce:

Humain

Espèces citées:

Humain, rat, souris

Remarque-IHC: il est suggéré de démasquer l'antigène avec un tampon de TE buffer pH 9,0; (*) A défaut, 'le démasquage de l'antigène peut être effectué avec un tampon citrate pH 6,0.

Contrôles positifs:

WB : cellules HeLa, cellules A549, cellules NCI-H1299, cellules U-251

IP : cellules A549,

IHC : tissu de cancer du poumon humain,

IF : cellules HepG2,

Informations générales

PPPDE peptidase domain 1 (PPPDE1), also named as PNAS4, is a highly conserved gene ubiquitously expressed in various tissues. PPPDE1 has been identified as a novel pro-apoptotic gene activated during the early response to DNA damage which is thought to play a critical role in cellular function regarding the maintenance of genomic integrity. This antibody specifically recognized endogenous PPPDE1, which has been confirmed by siRNA test.

Publications notables

Autrice	Pubmed ID	Journal	Application
Yu-Huan Kang	25120694	Oncol Lett	IHC
Xingwang Xie	30426280	Apoptosis	WB
Xingwang Xie	28483520	Biochem Biophys Res Commun	WB

Stockage

Stockage:

Stocker à -20°C. Stable pendant un an après l'expédition.

Tampon de stockage:

PBS avec azoture de sodium à 0,02 % et glycérol à 50 % pH 7,3

L'aliquotage n'est pas nécessaire pour le stockage à -20C

*** Les 20ul contiennent 0,1% de BSA.

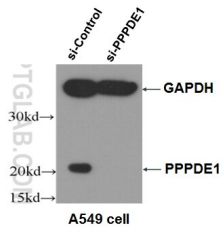
For technical support and original validation data for this product please contact:

T: 1 (888) 4PTGLAB (1-888-478-4522) (toll free in USA), or 1(312) 455-8498 (outside USA)

E: proteintech@ptglab.com
W: ptglab.com

This product is exclusively available under Proteintech Group brand and is not available to purchase from any other manufacturer.

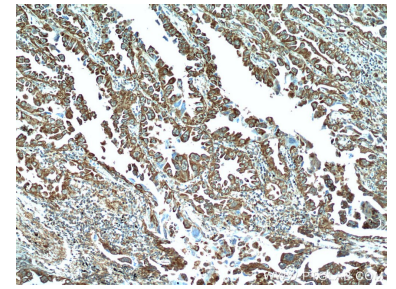
Données de validation sélectionnées



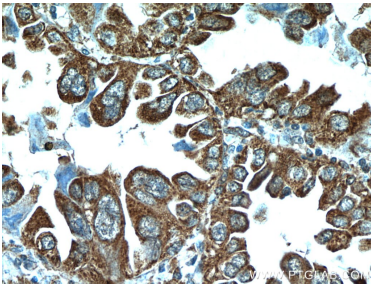
WB result of PPPDE1 antibody (20517-1-AP, 1:1000) with A549 cells transfected with si-control and si-PPPDE1.



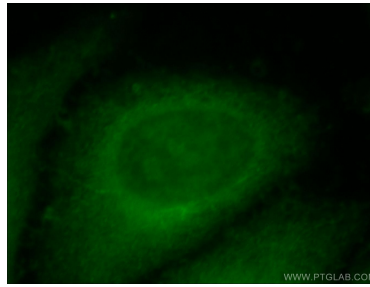
HeLa cells were subjected to SDS PAGE followed by western blot with 20517-1-AP (PPPDE1/PNAS4 antibody) at dilution of 1:500 incubated at room temperature for 1.5 hours.



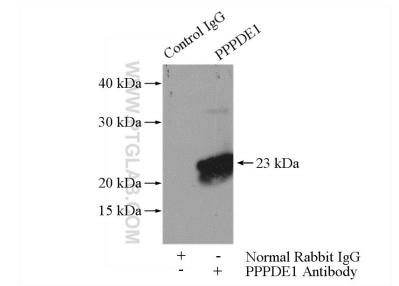
Immunohistochemical analysis of paraffin-embedded human lung cancer using 20517-1-AP (PPPDE1/PNAS4 antibody) at dilution of 1:50 (under 10x lens).



Immunohistochemical analysis of paraffin-embedded human lung cancer using 20517-1-AP (PPPDE1/PNAS4 antibody) at dilution of 1:50 (under 40x lens).



Immunofluorescent analysis of HepG2 cells, using PPPDE1 antibody 20517-1-AP at 1:25 dilution and FITC-labeled goat anti-Rabbit IgG (green).



IP Result of anti-PPPDE1/PNAS4 (IP:20517-1-AP, 4ug; Detection:20517-1-AP 1:500) with A549 cells lysate 2800ug.