

À des fins de recherche uniquement

# Anticorps Polyclonal de lapin anti-HCFC1



Numéro de catalogue: 19358-1-AP

1 Publications

## Informations de base

Numéro de catalogue:

19358-1-AP

Taille:

150ul, Concentration: 300 µg/ml by Nanodrop and 260 µg/ml by Bradford method using BSA as the standard;

Hôte:

Lapin

Isotype:

IgG

Immunogen Catalog Number:

AG6798

Numéro d'acquisition GenBank:

BC063435

Identification du gène (NCBI):

3054

Nom complet:

host cell factor C1 (VP16-accessory protein)

MW calculé

209 kDa

MW observés:

230 kDa, 300 kDa

Méthode de purification:

Purification par affinité contre l'antigène

Dilutions recommandées:

WB 1:500-1:2000

## Applications

Applications testées:

WB, ELISA

Demandes citées:

IF

Spécificité de l'espèce:

Humain, rat, souris

Espèces citées:

Humain, rat

Contrôles positifs:

WB: cellules HEK-293, cellules A431, cellules Jurkat

## Informations générales

Host cell factor 1 (HCFC1), also known as HCF-1, is a transcriptional co-regulator with a proteolytic cleavage at the PRO repeats that could be cleaved by O-GlcNAc transferase (OGT) to produce a heterodimeric complex of HCFC1N and HCFC1C subunits (PMID: 23539139). HCFC1 was first identified in herpes simplex virus transcription while it lacks a DNA binding domain. HCFC1 is not a traditional transcription factor, it interacts with multiple protein including transcription factors to regulate many biological processes, such as cell proliferation, migration, cell death and mitochondrial biogenesis (PMID: 25281006). Mutation in HCFC1 was related to an X-linked recessive disease --- cblX with a complex clinical manifestation involved in error of metabolism, neurocognitive impairment and craniofacial abnormalities (PMID: 24011988; PMID: 25281006).

## Publications notables

Autrice	Pubmed ID	Journal	Application
Erina Minato	31758567	Microbiol Immunol	IF

## Stockage

Stockage:

Stocker à -20°C. Stable pendant un an après l'expédition.

Tampon de stockage:

PBS avec azoture de sodium à 0,02 % et glycérol à 50 % pH 7,3

L'aliquotage n'est pas nécessaire pour le stockage à -20C

\*\*\* Les 20ul contiennent 0,1% de BSA.

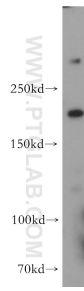
For technical support and original validation data for this product please contact:

T: 1 (888) 4PTGLAB (1-888-478-4522) (toll free in USA), or 1(312) 455-8498 (outside USA)

E: [proteintech@ptglab.com](mailto:proteintech@ptglab.com)  
W: [ptglab.com](http://ptglab.com)

This product is exclusively available under Proteintech Group brand and is not available to purchase from any other manufacturer.

## Données de validation sélectionnées



HEK-293 cells were subjected to SDS PAGE followed by western blot with 19358-1-AP (HCFC1 antibody) at dilution of 1:500 incubated at room temperature for 1.5 hours.