

À des fins de recherche uniquement

Anticorps Polyclonal de lapin anti-CREBZF



Numéro de catalogue: 19070-1-AP

Informations de base

Numéro de catalogue: 19070-1-AP	Numéro d'acquisition GenBank: BC093796	Méthode de purification: Purification par affinité contre l'antigène
Taille: 150ul, Concentration: 600 µg/ml by Nanodrop;	Identification du gène (NCBI): 58487	Dilutions recommandées: WB 1:500-1:2000
Hôte: Lapin	Nom complet: CREB/ATF bZIP transcription factor	
Isotype: IgG	MW calculé: 272 aa, 30 kDa	
Immunogen Catalog Number: AG13625	MW observés: 30 kDa	

Applications

Applications testées:
WB, ELISA
Spécificité de l'espèce:
souris

Contrôles positifs:

WB : tissu rénal de souris, tissu hépatique de souris, tissu ovarien de souris

Informations générales

CREBZF is a basic region-leucine zipper (bZIP) transcription factor that belongs to the cAMP-response-element-binding protein (CREB)/activating transcription factor (ATF) family. CREBZF gene expression produces two isoforms, CREBZF-L (long isoform of CREBZF, also known as SMILE) and CREBZF-S (short isoform of CREBZF, also known as Zhangfei), resulting from alternative initiation codons. CREBZF fulfills its role in transcriptional regulation by heterodimerizing with other transcription factors as a coregulator and then binding to target promoters and regulating downstream gene expression. CREBZF has been identified as a novel transcriptional coregulator of a variety of nuclear receptors (PMID: 31124138).

Stockage

Stockage:
Stocker à -20°C. Stable pendant un an après l'expédition.
Tampon de stockage:
PBS avec azoture de sodium à 0,02 % et glycérol à 50 % pH 7,3
L'aliquotage n'est pas nécessaire pour le stockage à -20C

*** Les 20ul contiennent 0,1% de BSA.

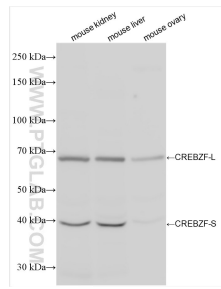
For technical support and original validation data for this product please contact:

T: 1 (888) 4PTGLAB (1-888-478-4522) (toll free in USA), or 1(312) 455-8498 (outside USA)

E: proteintech@ptglab.com
W: ptglab.com

This product is exclusively available under Proteintech Group brand and is not available to purchase from any other manufacturer.

Données de validation sélectionnées



Various lysates were subjected to SDS PAGE followed by western blot with 19070-1-AP (CREBZF antibody) at dilution of 1:1000 incubated at room temperature for 1.5 hours.