

À des fins de recherche uniquement

Anticorps Polyclonal de lapin anti-Cathepsin V



Numéro de catalogue: 18442-1-AP

Informations de base

Numéro de catalogue:

18442-1-AP

Taille:

150ul, Concentration: 300 µg/ml by Nanodrop and 220 µg/ml by Bradford method using BSA as the standard;

Hôte:

Lapin

Isotype:

IgG

Immunogen Catalog Number:

AG13284

Numéro d'acquisition GenBank:

BC023504

Identification du gène (NCBI):

1515

Nom complet:

cathepsin L2

MW calculé

37 kDa

MW observés:

26-36 kDa

Méthode de purification:

Purification par affinité contre l'antigène

Dilutions recommandées:

WB 1:500-1:1000

Applications

Applications testées:

WB, ELISA

Spécificité de l'espèce:

Humain, rat, souris

Contrôles positifs:

WB : tissu testiculaire de souris, tissu hépatique de rat, tissu testiculaire humain

Informations générales

Cathepsin V is a lysosomal cysteine protease that has an important role in corneal physiology. Cathepsin V was found to be differentially expressed in relation to pigmented skin backgrounds, and was about 7.5-folds higher in keratinocytes from lightly pigmented, relative to darkly pigmented skins. It is expressed in primary keratinocytes, melanocytes, and HaCaT keratinocytes, but not in primary fibroblasts. The purified cathepsin L2 was a high molecular weight proteinase of about 78 kDa, but it was unstable to SDS and reducing conditions, which dissociated parts of the proteinase into 66 kDa, 31 kDa and 26 kDa fragments (Food Chemistry, Volume 11, Issue 4, 879-886) and it can form a complex of 70 kDa with an unidentified subunit (PMID:1930136).

Stockage

Stockage:

Stocker à -20°C. Stable pendant un an après l'expédition.

Tampon de stockage:

PBS avec azotate de sodium à 0,02 % et glycérol à 50 % pH 7,3

L'aliquotage n'est pas nécessaire pour le stockage à -20C

***** Les 20ul contiennent 0,1% de BSA.**

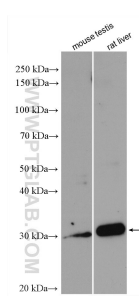
For technical support and original validation data for this product please contact:

T: 1 (888) 4PTGLAB (1-888-478-4522) (toll free in USA), or 1(312) 455-8498 (outside USA)

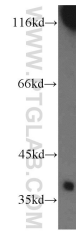
E: proteintech@ptglab.com
W: ptglab.com

This product is exclusively available under Proteintech Group brand and is not available to purchase from any other manufacturer.

Données de validation sélectionnées



Various lysates were subjected to SDS PAGE followed by western blot with 18442-1-AP (Cathepsin V antibody) at dilution of 1:800 incubated at room temperature for 1.5 hours.



human testis tissue were subjected to SDS PAGE followed by western blot with 18442-1-AP (Cathepsin V antibody) at dilution of 1:800 incubated at room temperature for 1.5 hours.