

À des fins de recherche uniquement

Anticorps Polyclonal de lapin anti- CLUAP1



Numéro de catalogue: 17470-1-AP

Phare

2 Publications

Informations de base

Numéro de catalogue:
17470-1-AP

Taille:
150ul, Concentration: 450 µg/ml by
Nanodrop and 247 µg/ml by Bradford
method using BSA as the standard;

Hôte:
Lapin

Isotype:
IgG

Immunogen Catalog Number:
AG11419

Numéro d'acquisition GenBank:
BC017070

Identification du gène (NCBI):
23059

Nom complet:
clusterin associated protein 1

MW calculé
413 aa, 48 kDa

MW observés:
53 kDa

Méthode de purification:
Purification par affinité contre
l'antigène

Dilutions recommandées:
WB 1:500-1:1000
IP 0.5-4.0 ug for IP and 1:500-1:1000
for WB
IF 1:20-1:200

Applications

Applications testées:
IF, IP, WB, ELISA

Demandes citées:
IF, WB

Spécificité de l'espèce:
canin, Humain, rat, souris

Espèces citées:
Humain

Contrôles positifs:

WB : tissu testiculaire de souris, cellules COLO 320,
cellules HepG2, cellules Y79

IP : cellules HepG2,

IF : cellules MDCK,

Informations générales

CLUAP1 (Clusterin-associated protein 1) was originally identified as a protein that interacts with CLU/clusterin, and whose gene is frequently upregulated in colon cancer (PMID: 15480429). Overexpression of CLUAP1 was also observed in osteosarcoma (PMID: 17203229). CLUAP1 is most abundantly expressed in testis among normal tissues (PMID: 15480429; 17203229). Studies reveal that CLUAP1 has a role in ciliogenesis and cilia-dependent development (PMID: 23351563; 23742838; 24970261).

Publications notables

Autrice	Pubmed ID	Journal	Application
Tomoharu Kanie	28625565	Dev Cell	WB
Tina Beyer	29615496	Mol Cell Proteomics	WB, IF

Stockage

Stockage:

Stocker à -20°C. Stable pendant un an après l'expédition.

Tampon de stockage:

PBS avec azoture de sodium à 0,02 % et glycérol à 50 % pH 7,3

L'aliquotage n'est pas nécessaire pour le stockage à -20C

*** Les 20ul contiennent 0,1% de BSA.

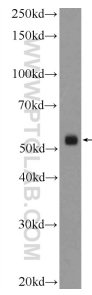
For technical support and original validation data for this product please contact:

T: 1 (888) 4PTGLAB (1-888-478-4522) (toll free
in USA), or 1(312) 455-8498 (outside USA)

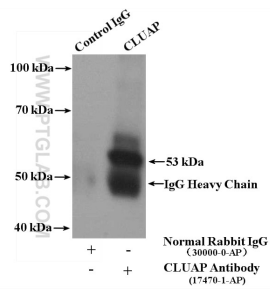
E: proteintech@ptglab.com
W: ptglab.com

This product is exclusively available under Proteintech Group brand and is not available to purchase from any other manufacturer.

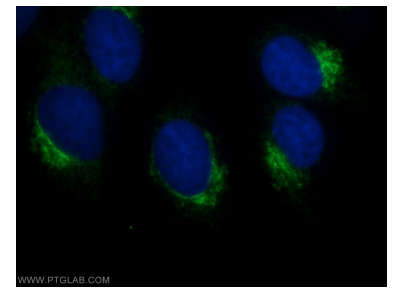
Données de validation sélectionnées



mouse testis tissue were subjected to SDS PAGE followed by western blot with 17470-1-AP (CLUAP1 Antibody) at dilution of 1:600 incubated at room temperature for 1.5 hours.



IP Result of anti-CLUAP1 (IP:17470-1-AP, 4ug; Detection:17470-1-AP 1:600) with HepG2 cells lysate 2400ug.



Immunofluorescent analysis of MDCK cells using 17470-1-AP (CLUAP1 antibody) at dilution of 1:50 and Alexa Fluor 488-conjugated AffiniPure Goat Anti-Rabbit IgG(H+L).