

À des fins de recherche uniquement

# Anticorps Polyclonal de lapin anti-CC2D1A



Numéro de catalogue: 16816-1-AP

Phare

4 Publications

## Informations de base

Numéro de catalogue: 16816-1-AP	Numéro d'acquisition GenBank: BC064981	Méthode de purification: Purification par affinité contre l'antigène
Taille: 150ul, Concentration: 1000 µg/ml by Nanodrop and 400 µg/ml by Bradford method using BSA as the standard;	Identification du gène (NCBI): 54862	Dilutions recommandées: WB 1:500-1:2000 IP 0.5-4.0 ug par IP and 1:1000-1:4000 for WB
Hôte: Lapin	Nom complet: coiled-coil and C2 domain containing 1A	IHC 1:20-1:200 IF 1:20-1:200
Isotype: IgG	MW calculé: 951 aa, 104 kDa	
Immunogen Catalog Number: AG10355	MW observés: 130 kDa, 104 kDa	

## Applications

### Applications testées:

IF, IHC, IP, WB, ELISA

### Demandes citées:

WB

### Spécificité de l'espèce:

Humain, rat, souris

### Espèces citées:

rat, souris

### Contrôles positifs:

WB : cellules HEK-293, cellules HeLa, cellules Jurkat, tissu hépatique de souris

IP : tissu hépatique de souris,

IHC : tissu testiculaire humain, tissu cérébral humain, tissu cutané humain, tissu hépatique humain

IF : cellules HepG2,

**Remarque-IHC: il est suggéré de démasquer l'antigène avec un tampon de TE buffer pH 9,0; (\*) À défaut, 'le démasquage de l'antigène peut être 'effectué avec un tampon citrate pH 6,0.**

## Informations générales

CC2D1A (coiled-coil and C2 domain-containing 1A), also known as Freud-1, Aki1 or TAPE (TBK1-associated protein in endolysosomes), is a evolutionary conserved protein located in different subcellular compartments, including the nucleus, centrosome, and endolysosomes. It acts as a scaffold protein that interacts with various proteins and plays diverse biological roles. Mutations in CC2D1A have been linked to nonsyndromic mental retardation (NMSR) and generate a truncated 85-kDa product. Several isoforms of CC2D1A proteins have also been described: 120 / 130-kDa doublet of long isoform and 67 kDa short isoform. The short isoform of CC2D1A has been identified as the predominant isoform in rodent cells, while the long isoform is more abundant in human cells. Recently it has been reported that CC2D1A/TAPE is the first innate immune regulator implicated in both TLR and RLR signaling at a very early step.

## Publications notables

Autrice	Pubmed ID	Journal	Application
Chen Kuan-Ru KR	22833682	J Biol Chem	WB
Song Zhang	28582325	Anesthesiology	WB
Cheng-Yi Yang	34132974	Neurotherapeutics	WB

## Stockage

### Stockage:

Stocker à -20°C. Stable pendant un an après l'expédition.

### Tampon de stockage:

PBS avec azoture de sodium à 0,02 % et glycérol à 50 % pH 7,3

L'aliquotage n'est pas nécessaire pour le stockage à -20C

\*\*\* Les 20ul contiennent 0,1% de BSA.

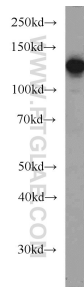
For technical support and original validation data for this product please contact:

T: 1 (888) 4PTGLAB (1-888-478-4522) (toll free in USA), or 1(312) 455-8498 (outside USA)

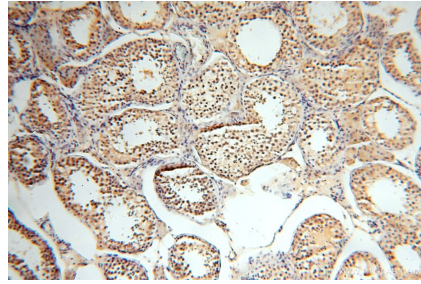
E: proteintech@ptglab.com  
W: ptglab.com

This product is exclusively available under Proteintech Group brand and is not available to purchase from any other manufacturer.

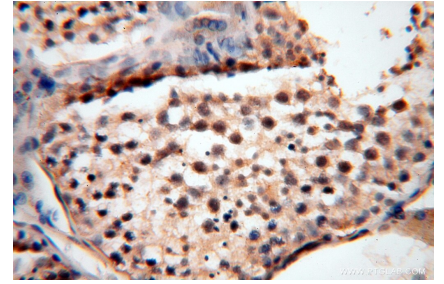
## Données de validation sélectionnées



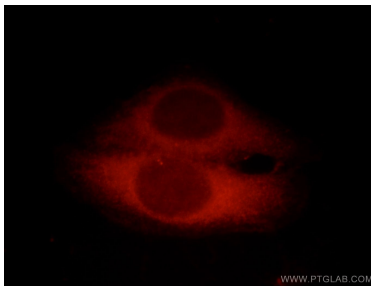
HEK-293 cells were subjected to SDS PAGE followed by western blot with 16816-1-AP (CC2D1A antibody) at dilution of 1:1000 incubated at room temperature for 1.5 hours.



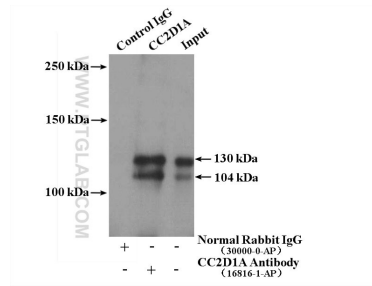
Immunohistochemical analysis of paraffin-embedded human testis using 16816-1-AP (CC2D1A antibody) at dilution of 1:100 (under 10x lens).



Immunohistochemical analysis of paraffin-embedded human testis using 16816-1-AP (CC2D1A antibody) at dilution of 1:100 (under 40x lens).



Immunofluorescent analysis of HepG2 cells, using CC2D1A antibody 16816-1-AP at 1:50 dilution and Rhodamine-labeled goat anti-rabbit IgG (red).



IP Result of anti-CC2D1A (IP:16816-1-AP, 4ug; Detection:16816-1-AP 1:2000) with mouse liver tissue lysate 4000ug.