

À des fins de recherche uniquement

# Anticorps Polyclonal de lapin anti-NDUFA4L2



Numéro de catalogue: 16480-1-AP

Phare

20 Publications

## Informations de base

Numéro de catalogue:  
16480-1-AP

Taille:  
150ul, Concentration: 350 µg/ml by Nanodrop and 233 µg/ml by Bradford method using BSA as the standard;

Hôte:  
Lapin

Isotype:  
IgG

Immunogen Catalog Number:  
AG9600

Numéro d'acquisition GenBank:  
BC011910

Identification du gène (NCBI):  
56901

Nom complet:  
NADH dehydrogenase (ubiquinone) 1 alpha subcomplex, 4-like 2

MW calculé:  
87 aa, 10 kDa

MW observés:  
10 kDa

Méthode de purification:  
Purification par affinité contre l'antigène

Dilutions recommandées:  
WB 1:1000-1:6000  
IP 0.5-4.0 ug for IP and 1:500-1:1000 for WB  
IHC 1:50-1:500  
IF 1:200-1:800

## Applications

Applications testées:  
IF, IHC, IP, WB, ELISA

Demandes citées:  
IF, IHC, IP, WB

Spécificité de l'espèce:  
Humain, rat, souris

Espèces citées:  
Humain, rat, souris

**Remarque-IHC: il est suggéré de démasquer l'antigène avec un tampon de TE buffer pH 9,0; (\*) A défaut, 'le démasquage de l'antigène peut être 'effectué avec un tampon citrate pH 6,0.**

Contrôles positifs:

WB : cellules COLO 320, cellules HeLa, cellules HepG2, cellules HUVEC, cellules PC-3

IP : cellules HeLa,

IHC : tissu de cancer du foie humain, tissu hépatique humain, tissu rénal de souris, tissu rénal humain

IF : cellules HeLa,

## Informations générales

NDUFA4L2(NADH dehydrogenase [ubiquinone] 1 alpha subcomplex subunit 4-like 2), also named as NUOMS, is a HIF-1α target gene that localizes to the mitochondria and belongs to the complex I NDUFA4 subunit family. It downregulates oxygen consumption and Complex I activity in hypoxia. NDUFA4L2 is involved in hypoxic adaptation by decreasing mitochondrial ROS production.

## Publications notables

Autrice	Pubmed ID	Journal	Application
Yue Zhang	36307669	J Bioenerg Biomembr	IHC
Zhengye Liu	34724256	FASEB J	WB, IF
Wen-Ning Xu	33330441	Front Cell Dev Biol	WB

## Stockage

Stockage:

Stocker à -20°C. Stable pendant un an après l'expédition.

Tampon de stockage:

PBS avec azoture de sodium à 0,02 % et glycérol à 50 % pH 7,3

L'aliquotage n'est pas nécessaire pour le stockage à -20C

\*\*\* Les 20ul contiennent 0,1% de BSA.

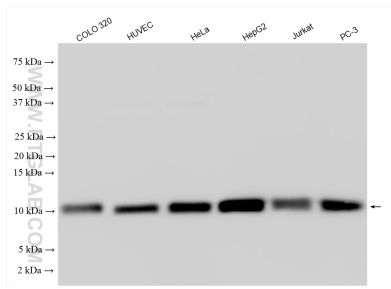
For technical support and original validation data for this product please contact:

T: 1 (888) 4PTGLAB (1-888-478-4522) (toll free in USA), or 1(312) 455-8498 (outside USA)

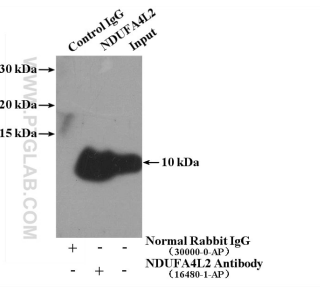
E: proteintech@ptglab.com  
W: ptglab.com

This product is exclusively available under Proteintech Group brand and is not available to purchase from any other manufacturer.

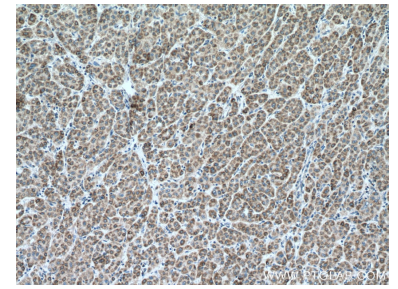
## Données de validation sélectionnées



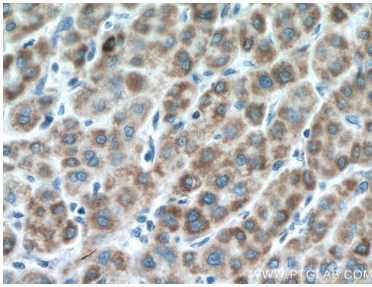
Various lysates were subjected to SDS PAGE followed by western blot with 16480-1-AP (NDUFA4L2 antibody) at dilution of 1:3000 incubated at room temperature for 1.5 hours.



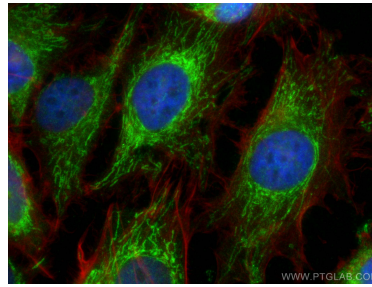
IP Result of anti-NDUFA4L2 (IP:16480-1-AP, 4ug; Detection:16480-1-AP 1:500) with HeLa cells lysate 1200ug.



Immunohistochemical analysis of paraffin-embedded human liver cancer tissue slide using 16480-1-AP (NDUFA4L2 antibody) at dilution of 1:200 (under 10x lens. Heat mediated antigen retrieval with Tris-EDTA buffer (pH 9.0).



Immunohistochemical analysis of paraffin-embedded human liver cancer tissue slide using 16480-1-AP (NDUFA4L2 antibody) at dilution of 1:200 (under 40x lens. Heat mediated antigen retrieval with Tris-EDTA buffer (pH 9.0).



Immunofluorescent analysis of (4% PFA) fixed HeLa cells using NDUFA4L2 antibody (16480-1-AP) at dilution of 1:400 and CoraLite®488-Conjugated AffiniPure Goat Anti-Rabbit IgG(H+L), CL594-Phalloidin (red).