

À des fins de recherche uniquement

# Anticorps Polyclonal de lapin anti-VPS25



Numéro de catalogue: 15669-1-AP

Phare

7 Publications

## Informations de base

<b>Numéro de catalogue:</b> 15669-1-AP	<b>Numéro d'acquisition GenBank:</b> BC006282	<b>Méthode de purification:</b> Purification par affinité contre l'antigène
<b>Taille:</b> 150ul, Concentration: 400 µg/ml by Nanodrop and 300 µg/ml by Bradford method using BSA as the standard;	<b>Identification du gène (NCBI):</b> 84313	<b>Dilutions recommandées:</b> WB 1:500-1:2000 IHC 1:50-1:500 IF 1:50-1:500
<b>Hôte:</b> Lapin	<b>Nom complet:</b> vacuolar protein sorting 25 homolog (S. cerevisiae)	
<b>Isotype:</b> IgG	<b>MW calculé:</b> 176 aa, 21 kDa	
<b>Immunogen Catalog Number:</b> AG8134	<b>MW observés:</b> 21 kDa	

## Applications

### Applications testées:

IF, IHC, WB, ELISA

### Demandes citées:

IF, IHC, WB

### Spécificité de l'espèce:

Humain, rat, souris

### Espèces citées:

canin, Humain, porc, souris

**Remarque-IHC: il est suggéré de démasquer l'antigène avec un tampon de TE buffer pH 9,0; (\*) A défaut, 'le démasquage de l'antigène peut être effectué avec un tampon citrate pH 6,0.**

### Contrôles positifs:

**WB:** cellules HepG2, cellules A549, cellules HeLa, tissu cérébral de souris, tissu cérébral humain, tissu hépatique de rat, tissu hépatique de souris

**IHC:** tissu de cancer du sein humain, tissu cérébral de souris, tissu hépatique de souris

**IF:** cellules HepG2,

## Informations générales

VPS25 is a component of the endosome-associated complex ESCRT-II (Endosomal Sorting Complexes Required for Transport protein II). ESCRT-II complex, composed of VPS25, VPS36, and SNF8, functions in sorting of ubiquitinated membrane proteins during endocytosis. ESCRT-II complex is probably involved in the recruitment of the ESCRT-III complex. VPS25 is highly conserved. Human VPS25 gene maps to chromosome 17q21.31 and is expressed in a wide range of tissues (PMID: 16889659).

## Publications notables

Autrice	Pubmed ID	Journal	Application
Yoshinori Takahashi	31519728	J Cell Biol	WB
Zhihui Ruan	36274707	Front Microbiol	WB,IF
Eva P Karasmanis	31204162	Curr Biol	WB

## Stockage

### Stockage:

Stocker à -20°C. Stable pendant un an après l'expédition.

### Tampon de stockage:

PBS avec azoture de sodium à 0,02 % et glycérol à 50 % pH 7,3

L'aliquotage n'est pas nécessaire pour le stockage à -20C

\*\*\* Les 20ul contiennent 0,1% de BSA.

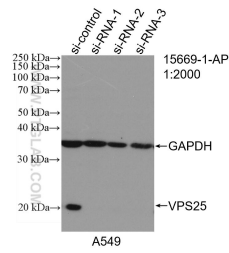
For technical support and original validation data for this product please contact:

T: 1 (888) 4PTGLAB (1-888-478-4522) (toll free in USA), or 1(312) 455-8498 (outside USA)

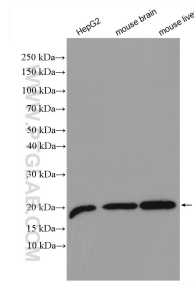
E: proteintech@ptglab.com  
W: ptglab.com

This product is exclusively available under Proteintech Group brand and is not available to purchase from any other manufacturer.

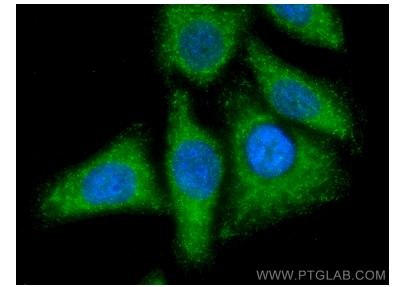
## Données de validation sélectionnées



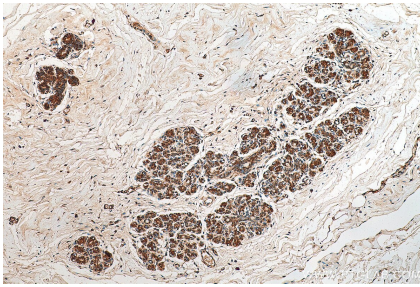
WB result of VPS25 antibody (15669-1-AP; 1:2000; incubated at room temperature for 1.5 hours) with sh-Control and sh-VPS25 transfected A549 cells.



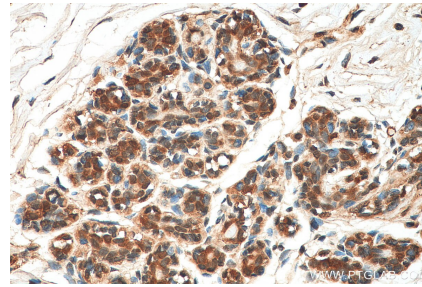
Various lysates were subjected to SDS PAGE followed by western blot with 15669-1-AP (VPS25 antibody) at dilution of 1:1000 incubated at room temperature for 1.5 hours.



Immunofluorescent analysis of (-20°C Methanol) fixed HepG2 cells using VPS25 antibody (15669-1-AP) at dilution of 1:200 and CoraLite®488-Conjugated AffiniPure Goat Anti-Rabbit IgG(H+L).



Immunohistochemical analysis of paraffin-embedded human breast cancer tissue slide using 15669-1-AP (VPS25 antibody) at dilution of 1:200 (under 10x lens). Heat mediated antigen retrieval with Tris-EDTA buffer (pH 9.0).



Immunohistochemical analysis of paraffin-embedded human breast cancer tissue slide using 15669-1-AP (VPS25 antibody) at dilution of 1:200 (under 40x lens). Heat mediated antigen retrieval with Tris-EDTA buffer (pH 9.0).