

À des fins de recherche uniquement

Anticorps Polyclonal de lapin anti-USP30



Numéro de catalogue: 15402-1-AP

1 Publications

Informations de base

Numéro de catalogue: 15402-1-AP	Numéro d'acquisition GenBank: BC004868	Méthode de purification: Purification par affinité contre l'antigène
Taille: 150ul, Concentration: 900 µg/ml by Nanodrop;	Identification du gène (NCBI): 84749	Dilutions recommandées: WB 1:500-1:2000 IHC 1:50-1:500 IF 1:50-1:500
Hôte: Lapin	Nom complet: ubiquitin specific peptidase 30	
Isotype: IgG	MW calculé 58.5 kDa	
Immunogen Catalog Number: AG7620	MW observés: 59-67 kDa	

Applications

Applications testées:

IF, IHC, WB, ELISA

Demandes citées:

IF, WB

Spécificité de l'espèce:

Humain, rat, souris

Espèces citées:

Humain, souris

Contrôles positifs:

WB : cellules Daudi, cellules HepG2, cellules hTERT-RPE1, tissu rénal de rat, tissu rénal de souris

IHC : tissu de cancer du foie humain, tissu de cancer du côlon humain

IF : cellules A549,

Remarque-IHC: il est suggéré de démasquer l'antigène avec un tampon de TE buffer pH 9,0; (*) À défaut, le démasquage de l'antigène peut être effectué avec un tampon citrate pH 6,0.

Informations générales

USP30, a mitochondrion-localized deubiquitylase, regulates mitophagy. Mitochondrial damage stimulates parkin to assemble Lys 6, Lys 11 and Lys 63 chains on mitochondria, and that USP30 is a ubiquitin-specific deubiquitylase with a strong preference for cleaving Lys 6- and Lys 11-linked multimers. USP30 can be ubiquitinated by parkin (PARK2) at Lys-235 and Lys-289. USP30 inhibition is potentially beneficial for treating Parkinson disease by promoting mitochondrial clearance and quality control. USP30 was detected 67 kDa by ubiquitination (PMID: 34704599).

Publications notables

Autrice	Pubmed ID	Journal	Application
Yang Wu	37300943	Biochem Biophys Res Commun	WB,IF

Stockage

Stockage:

Stocker à -20°C. Stable pendant un an après l'expédition.

Tampon de stockage:

PBS avec azoture de sodium à 0,02 % et glycérol à 50 % pH 7,3

L'aliquotage n'est pas nécessaire pour le stockage à -20C

*** Les 20ul contiennent 0,1% de BSA.

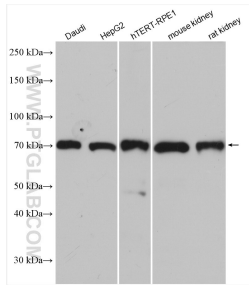
For technical support and original validation data for this product please contact:

T: 1 (888) 4PTGLAB (1-888-478-4522) (toll free in USA), or 1(312) 455-8498 (outside USA)

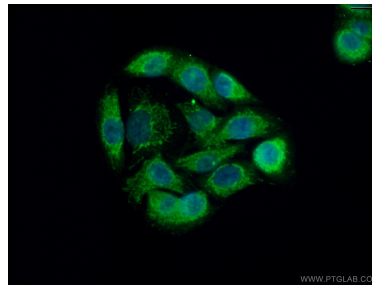
E: proteintech@ptglab.com
W: ptglab.com

This product is exclusively available under Proteintech Group brand and is not available to purchase from any other manufacturer.

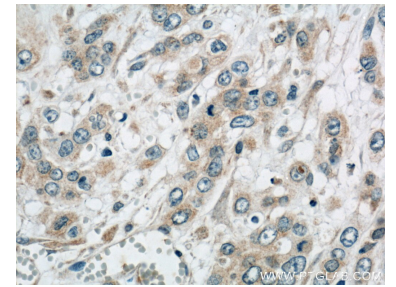
Données de validation sélectionnées



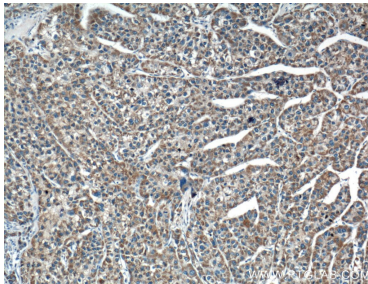
Various lysates were subjected to SDS PAGE followed by western blot with 15402-1-AP (USP30 antibody) at dilution of 1:1000 incubated at room temperature for 1.5 hours.



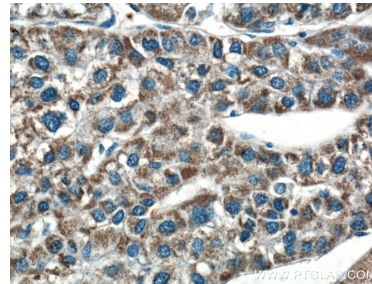
Immunofluorescent analysis of (4% PFA) fixed A549 cells using 15402-1-AP (USP30 antibody) at dilution of 1:50 and Alexa Fluor 488-conjugated AffiniPure Goat Anti-Rabbit IgG(H+L).



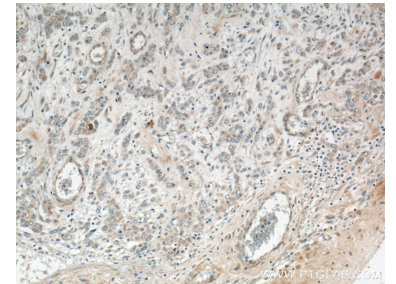
Immunohistochemical analysis of paraffin-embedded human colon cancer tissue slide using 15402-1-AP (USP30 antibody) at dilution of 1:200 (under 40x lens).



Immunohistochemical analysis of paraffin-embedded human liver cancer tissue slide using 15402-1-AP (USP30 antibody) at dilution of 1:200 (under 10x lens).



Immunohistochemical analysis of paraffin-embedded human liver cancer tissue slide using 15402-1-AP (USP30 antibody) at dilution of 1:200 (under 40x lens).



Immunohistochemical analysis of paraffin-embedded human colon cancer tissue slide using 15402-1-AP (USP30 antibody) at dilution of 1:200 (under 10x lens).