

À des fins de recherche uniquement

# Anticorps Polyclonal de lapin anti-PSME3



Numéro de catalogue: 14907-1-AP

Phare

5 Publications

## Informations de base

Numéro de catalogue:

14907-1-AP

Taille:

150ul, Concentration: 450 µg/ml by Nanodrop;

Hôte:

Lapin

Isotype:

IgG

Immunogen Catalog Number:

AG6702

Numéro d'acquisition GenBank:

BC001423

Identification du gène (NCBI):

10197

Nom complet:

proteasome (prosome, macropain) activator subunit 3 (PA28 gamma; Ki)

MW calculé

30 kDa

MW observés:

30 kDa

Méthode de purification:

Purification par affinité contre l'antigène

Dilutions recommandées:

WB 1:1000-1:4000

IP 0.5-4.0 ug for IP and 1:500-1:1000

for WB

IHC 1:50-1:500

IF 1:10-1:100

## Applications

Applications testées:

IF, IHC, IP, WB, ELISA

Demandes citées:

IF, IHC, WB

Spécificité de l'espèce:

Humain, rat, souris

Espèces citées:

Humain

Contrôles positifs:

WB : cellules COLO 320, cellules Caco-2, cellules HCT 116, cellules HepG2, tissu splénique de souris

IP : cellules COLO 320,

IHC : tissu rénal humain,

IF : cellules HepG2,

**Remarque-IHC: il est suggéré de démasquer l'antigène avec un tampon de TE buffer pH 9,0; (\*) À défaut, 'le démasquage de l'antigène peut être 'effectué avec un tampon citrate pH 6,0.**

## Informations générales

PSME3 gene encodes proteasome activator complex subunit 3, which is also called REG-gamma or PA28-gamma. REG-gamma activates the trypsin-like catalytic subunit of the proteasome thus is a proteasome regulator. MDM2-TP53 interaction which promotes ubiquitination- and MDM2-dependent proteasomal degradation of TP53, may be promoted by REG-gamma resulting in inhibited apoptosis after DNA damage. REG-gamma may also be involved in cell cycle regulation.

## Publications notables

Autrice	Pubmed ID	Journal	Application
Jiefang Guo	27756569	Cancer Lett	WB,IHC
Zhen Yu	35344764	EBioMedicine	IHC
Doueiri Rami R	22876852	Retrovirology	WB

## Stockage

Stockage:

Stocker à -20°C. Stable pendant un an après l'expédition.

Tampon de stockage:

PBS avec azoture de sodium à 0,02 % et glycérol à 50 % pH 7,3

L'aliquotage n'est pas nécessaire pour le stockage à -20C

\*\*\* Les 20ul contiennent 0,1% de BSA.

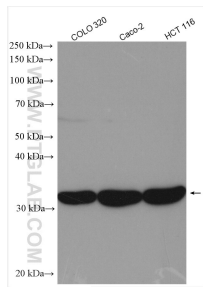
For technical support and original validation data for this product please contact:

T: 1 (888) 4PTGLAB (1-888-478-4522) (toll free in USA), or 1(312) 455-8498 (outside USA)

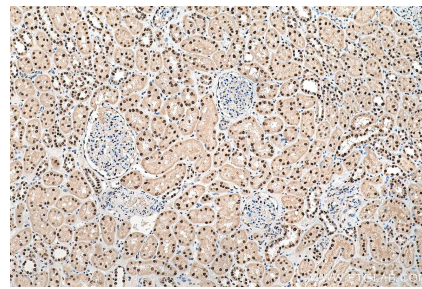
E: proteintech@ptglab.com  
W: ptglab.com

This product is exclusively available under Proteintech Group brand and is not available to purchase from any other manufacturer.

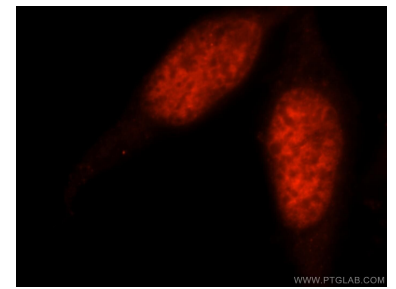
## Données de validation sélectionnées



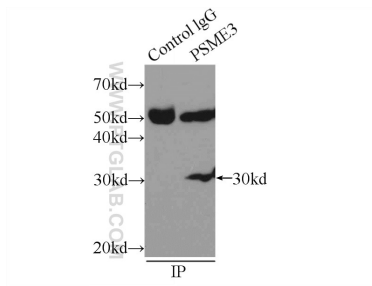
COLO 320 cells were subjected to SDS PAGE followed by western blot with 14907-1-AP (PSME3 antibody) at dilution of 1:2000 incubated at room temperature for 1.5 hours.



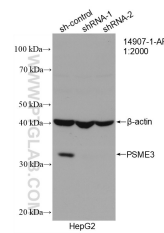
Immunohistochemical analysis of paraffin-embedded human kidney tissue slide using 14907-1-AP (PSME3 antibody) at dilution of 1:200 (under 10x lens). Heat mediated antigen retrieval with Tris-EDTA buffer (pH 9.0).



Immunofluorescent analysis of HepG2 cells, using PSME3 antibody 14907-1-AP at 1:25 dilution and Rhodamine-labeled goat anti-rabbit IgG (red).



IP Result of anti-PSME3 (IP:14907-1-AP, 3ug; Detection:14907-1-AP 1:500) with COLO 320 cells lysate 2000ug.



WB result of PSME3 antibody (14907-1-AP; 1:2000; incubated at room temperature for 1.5 hours) with sh-Control and sh-PSME3 transfected HepG2 cells.