

À des fins de recherche uniquement

Anticorps Polyclonal de lapin anti-RPL13A



Numéro de catalogue: 14633-1-AP

Informations de base

Numéro de catalogue: 14633-1-AP	Numéro d'acquisition GenBank: BC065236	Méthode de purification: Purification par affinité contre l'antigène
Taille: 150ul , Concentration: 450 µg/ml by Nanodrop;	Identification du gène (NCBI): 23521	Dilutions recommandées: WB 1:1000-1:5000
Hôte: Lapin	Nom complet: ribosomal protein L13a	
Isotype: IgG	MW calculé 23 kDa	
Immunogen Catalog Number: AG6212	MW observés: 25-28 kDa	

Applications

Applications testées: WB, ELISA	Contrôles positifs: WB : cellules A549, cellules HEK-293, cellules HeLa, cellules Jurkat, cellules RAW264.7
Spécificité de l'espèce: Humain, souris	

Informations générales

Ribosomal protein L13a(RPL13a) is a member of the L13 ribosomal protein family and a structural component of the large 60S ribosomal subunit. It's a reference gene(RG) that stably expressed not only during differentiation, but also during expansion to higher passages. And it's suggested as a RG for a variety research field. RPL13a is a key component of the IFN-gamma-activated inhibitor of translation(GAIT) complex, which inhibits translation of a select group of inflammation-related transcripts via binding to the 3' UTR of target mRNA. once phosphorylated of Ser77 by ZIPIK, RPL13a released from the complex.

Stockage

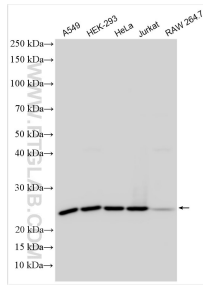
Stockage:
Stocker à -20°C. Stable pendant un an après l'expédition.
Tampon de stockage:
PBS avec azoture de sodium à 0,02 % et glycérol à 50 % pH 7,3
L'aliquotage n'est pas nécessaire pour le stockage à -20C

*** Les 20ul contiennent 0,1% de BSA.

For technical support and original validation data for this product please contact:
T: 1 (888) 4PTGLAB (1-888-478-4522) (toll free in USA), or 1(312) 455-8498 (outside USA)
E: proteintech@ptglab.com
W: ptglab.com

This product is exclusively available under Proteintech Group brand and is not available to purchase from any other manufacturer.

Données de validation sélectionnées



Various lysates were subjected to SDS PAGE followed by western blot with 14633-1-AP (RPL13A antibody) at dilution of 1:2500 incubated at room temperature for 1.5 hours.