

À des fins de recherche uniquement

Anticorps Polyclonal de lapin anti-RGS4



Numéro de catalogue: 14530-1-AP

Phare

5 Publications

Informations de base

Numéro de catalogue:

14530-1-AP

Taille:

150ul, Concentration: 700 µg/ml by Nanodrop;

Hôte:

Lapin

Isotype:

IgG

Immunogen Catalog Number:

AG6029

Numéro d'acquisition GenBank:

BC051869

Identification du gène (NCBI):

5999

Nom complet:

regulator of G-protein signaling 4

MW calculé

23 kDa

MW observés:

30 kDa

Méthode de purification:

Purification par affinité contre l'antigène

Dilutions recommandées:

WB 1:500-1:1000

IP 0.5-4.0 µg for IP and 1:200-1:1000 for WB

IHC 1:50-1:500

IF 1:20-1:200

Applications

Applications testées:

IF, IHC, IP, WB, ELISA

Demandes citées:

IF, IHC, WB

Spécificité de l'espèce:

Humain, rat, souris

Espèces citées:

Humain, souris

Contrôles positifs:

WB : tissu de cerveau de souris, cellules PC-12, tissu cérébral de souris

IP : tissu cérébral de souris,

IHC : tissu pulmonaire humain, tissu cérébral humain

IF : cellules HeLa,

Remarque-IHC: il est suggéré de démasquer l'antigène avec un tampon de TE buffer pH 9,0; (*) À défaut, le démasquage de l'antigène peut être effectué avec un tampon citrate pH 6,0.

Informations générales

Regulator of G protein signaling (RGS) proteins are a large family of highly diverse, multifunctional signaling proteins. RGS4 is one of seven members of a classic R4 RGS protein that accelerates the GTPase activity of the Gai/0 and Gaq/11 family members. RGS4 is highly expressed in multiple brain regions including the cerebral cortex, amygdala, hippocampus, and striatum. Extensive studies have demonstrated that RGS4 plays an important role in regulating smooth muscle contraction, cardiomyocyte development, neural plasticity and psychiatric disorders.

Publications notables

Autrice	Pubmed ID	Journal	Application
Xiaotong Xue	29108247	Oncotarget	WB,IHC
Zheng He	31695428	Onco Targets Ther	WB,IHC,IF
Gordon S Wong	32199913	J Allergy Clin Immunol	IHC

Stockage

Stockage:

Stocker à -20°C. Stable pendant un an après l'expédition.

Tampon de stockage:

PBS avec azoture de sodium à 0,02 % et glycérol à 50 % pH 7,3

L'aliquotage n'est pas nécessaire pour le stockage à -20C

***** Les 20ul contiennent 0,1% de BSA.**

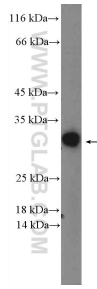
For technical support and original validation data for this product please contact:

T: 1 (888) 4PTGLAB (1-888-478-4522) (toll free in USA), or 1(312) 455-8498 (outside USA)

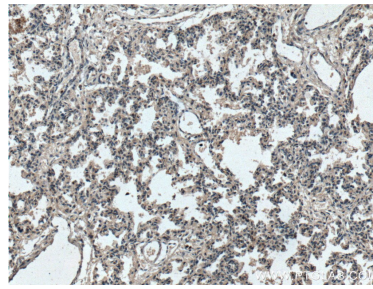
E: proteintech@ptglab.com
W: ptglab.com

This product is exclusively available under Proteintech Group brand and is not available to purchase from any other manufacturer.

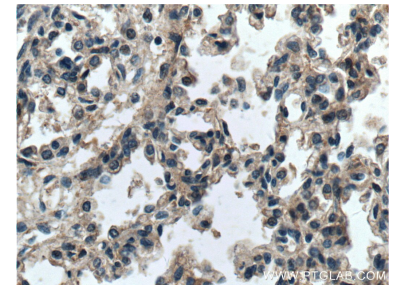
Données de validation sélectionnées



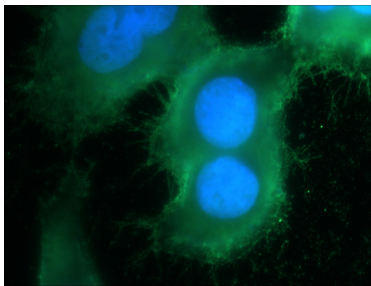
mouse cerebellum tissue were subjected to SDS PAGE followed by western blot with 14530-1-AP (RGS4 Antibody) at dilution of 1:600 incubated at room temperature for 1.5 hours.



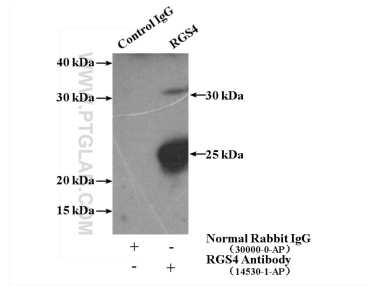
Immunohistochemical analysis of paraffin-embedded human lung tissue slide using 14530-1-AP (RGS4 Antibody) at dilution of 1:200 (under 10x lens). Heat mediated antigen retrieval with Tris-EDTA buffer (pH 9.0).



Immunohistochemical analysis of paraffin-embedded human lung tissue slide using 14530-1-AP (RGS4 Antibody) at dilution of 1:200 (under 40x lens). Heat mediated antigen retrieval with Tris-EDTA buffer (pH 9.0).



Immunofluorescent analysis of HeLa cells using 14530-1-AP (RGS4 antibody) at dilution of 1:50 and Alexa Fluor 488-conjugated AffiniPure Goat Anti-Rabbit IgG(H+L).



IP Result of anti-RGS4 (IP:14530-1-AP, 4ug; Detection:14530-1-AP 1:300) with mouse brain tissue lysate 4000ug.