

À des fins de recherche uniquement

Anticorps Polyclonal de lapin anti-FBXL14



Numéro de catalogue: 13934-1-AP

2 Publications

Informations de base

Numéro de catalogue: 13934-1-AP	Numéro d'acquisition GenBank: BC028132	Méthode de purification: Purification par affinité contre l'antigène
Taille: 150ul, Concentration: 350 µg/ml by Nanodrop and 233 µg/ml by Bradford method using BSA as the standard;	Identification du gène (NCBI): 144699	Dilutions recommandées: WB 1:500-1:1000 IHC 1:20-1:200 IF 1:20-1:200
Hôte: Lapin	Nom complet: F-box and leucine-rich repeat protein 14	
Isotype: IgG	MW calculé: 418 aa, 46 kDa	
Immunogen Catalog Number: AG4975	MW observés: 46 kDa	

Applications

Applications testées:

IF, IHC, WB, ELISA

Demandes citées:

WB

Spécificité de l'espèce:

Humain, rat, souris

Espèces citées:

Humain, souris

Remarque-IHC: il est suggéré de démasquer l'antigène avec un tampon de TE buffer pH 9,0; (*) A défaut, le démasquage de l'antigène peut être effectué avec un tampon citrate pH 6,0.

Contrôles positifs:

WB : cellules HepG2,

IHC : tissu hépatique humain,

IF : cellules HepG2,

Informations générales

FBXL14(F-box/LRR-repeat protein 14) is also named as FBL14 and belongs to the F-box protein family, which are characterized by an approximately 40-amino acid F-box motif. It is part of a SCF (SKP1-cullin-F-box) ubiquitin-protein ligase complex. SNAIL1 is an unstable transcription factor that is phosphorylated by GSK3-beta in the nucleus, which triggers its nuclear export and subsequent ubiquitination and proteasomal degradation. FBXL14 is directed ubiquitination and degradation of SNAIL1 in human and mouse cell lines(PMID:19955572).

Publications notables

Autrice	Pubmed ID	Journal	Application
Christopher Noyes	36653474	Commun Biol	WB
Y Liu	25654763	Cell Death Dis	WB

Stockage

Stockage:

Stocker à -20°C. Stable pendant un an après l'expédition.

Tampon de stockage:

PBS avec azoture de sodium à 0,02 % et glycérol à 50 % pH 7,3

L'aliquotage n'est pas nécessaire pour le stockage à -20C

*** Les 20ul contiennent 0,1% de BSA.

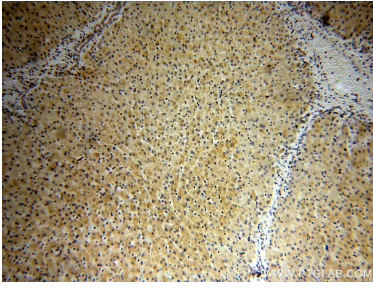
For technical support and original validation data for this product please contact:

T: 1 (888) 4PTGLAB (1-888-478-4522) (toll free in USA), or 1(312) 455-8498 (outside USA)

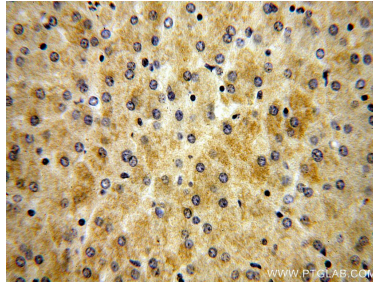
E: proteintech@ptglab.com
W: ptglab.com

This product is exclusively available under Proteintech Group brand and is not available to purchase from any other manufacturer.

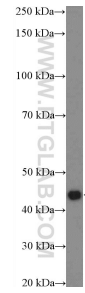
Données de validation sélectionnées



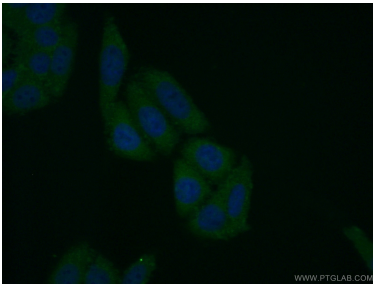
Immunohistochemical analysis of paraffin-embedded human liver using 13934-1-AP (FBXL14 antibody) at dilution of 1:50 (under 10x lens).



Immunohistochemical analysis of paraffin-embedded human liver using 13934-1-AP (FBXL14 antibody) at dilution of 1:50 (under 40x lens).



HepG2 cells were subjected to SDS PAGE followed by western blot with 13934-1-AP (FBXL14 Antibody) at dilution of 1:600 incubated at room temperature for 1.5 hours.



Immunofluorescent analysis of (10% Formaldehyde) fixed HepG2 cells using 13934-1-AP (FBXL14 antibody) at dilution of 1:50 and Alexa Fluor 488-conjugated AffiniPure Goat Anti-Rabbit IgG(H+L).