

À des fins de recherche uniquement

# Anticorps Polyclonal de lapin anti-TFEC



Numéro de catalogue: 13547-1-AP

## Informations de base

Numéro de catalogue:

13547-1-AP

Taille:

150ul, Concentration: 450 µg/ml by Nanodrop;

Hôte:

Lapin

Isotype:

IgG

Immunogen Catalog Number:

AG4061

Numéro d'acquisition GenBank:

BC029891

Identification du gène (NCBI):

22797

Nom complet:

transcription factor EC

MW calculé

347 aa, 39 kDa

MW observés:

35-40 kDa, 65 kDa

Méthode de purification:

Purification par affinité contre l'antigène

Dilutions recommandées:

WB 1:500-1:2000

IP 0.5-4.0 ug for IP and 1:500-1:1000 for WB

## Applications

Applications testées:

IP, WB, ELISA

Spécificité de l'espèce:

Humain, rat, souris

Contrôles positifs:

WB : tissu testiculaire de souris, cellules COLO 320

IP : tissu testiculaire de souris,

## Informations générales

The DNA-binding factor TFE3 contains adjacent helix-loop-helix (HLH) and leucine zipper (LZ) domains flanked by an upstream basic region. These protein motifs are frequently observed in other transcription factors and are particularly common to members of the Myc family. TFEC shares a bHLH/LZ structure with TFE3 and a closely related protein microphthalmia-associated transcription factor (MITF), which is critically involved in melanocyte differentiation. The expression of TFEC is mainly in fibroblasts, myoblasts, chondrosarcoma cells and myeloma cells. 50kDa TFEC isoforms are produced by alternative splicing (PMID: 29303964, PMID: 11467950).

## Stockage

Stockage:

Stocker à -20°C. Stable pendant un an après l'expédition.

Tampon de stockage:

PBS avec azoture de sodium à 0,02 % et glycérol à 50 % pH 7,3

L'aliquotage n'est pas nécessaire pour le stockage à -20C

\*\*\* Les 20ul contiennent 0,1% de BSA.

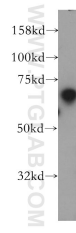
For technical support and original validation data for this product please contact:

T: 1 (888) 4PTGLAB (1-888-478-4522) (toll free in USA), or 1(312) 455-8498 (outside USA)

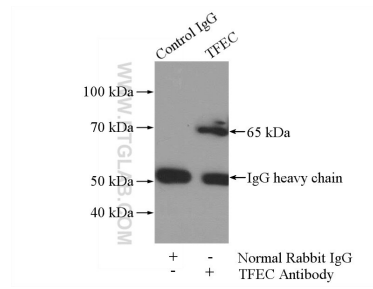
E: [proteintech@ptglab.com](mailto:proteintech@ptglab.com)  
W: [ptglab.com](http://ptglab.com)

This product is exclusively available under Proteintech Group brand and is not available to purchase from any other manufacturer.

## Données de validation sélectionnées



mouse testis tissue were subjected to SDS PAGE followed by western blot with 13547-1-AP (TFEC antibody) at dilution of 1:300 incubated at room temperature for 1.5 hours.



IP Result of anti-TFEC (IP:13547-1-AP, 4ug; Detection:13547-1-AP 1:500) with mouse testis tissue lysate 4000ug.