

À des fins de recherche uniquement

# Anticorps Polyclonal de lapin anti-RUFY1



Numéro de catalogue: 13498-1-AP

4 Publications

## Informations de base

<b>Numéro de catalogue:</b> 13498-1-AP	<b>Numéro d'acquisition GenBank:</b> BC032571	<b>Méthode de purification:</b> Purification par affinité contre l'antigène
<b>Taille:</b> 150ul , Concentration: 550 µg/ml by Nanodrop and 307 µg/ml by Bradford method using BSA as the standard;	<b>Identification du gène (NCBI):</b> 80230	<b>Dilutions recommandées:</b> WB 1:1000-1:4000 IF 1:20-1:200
<b>Hôte:</b> Lapin	<b>Nom complet:</b> RUN and FYVE domain containing 1	
<b>Isotype:</b> IgG	<b>MW calculé:</b> 708 aa, 80 kDa	
<b>Immunogen Catalog Number:</b> AG4324	<b>MW observés:</b> 69 kDa, 80 kDa	

## Applications

<b>Applications testées:</b> IF, IP, WB, ELISA	<b>Contrôles positifs:</b> WB : cellules HeLa, IF : cellules HeLa,
<b>Demandes citées:</b> CoIP, IF, WB	
<b>Spécificité de l'espèce:</b> Humain, rat, souris	
<b>Espèces citées:</b> Humain, souris	

## Informations générales

Rab proteins form the largest group within the Ras superfamily of small GTPases, which acts as molecular switches by cycling between their inactive active GTP-bound and GDP-bound forms [PMID:15520808]. The small GTP-binding protein Rab4 has been involved in the recycling of  $\alpha v\beta 3$  integrins in response to platelet-derived growth factor (PDGF) stimulation suggesting a role for Rab4 in cell adhesion and migration [PMID:17001082]. Rabip4 (Rab4 interacting protein), which possesses a RUN domain, two coiled-coil domains and a FYVE finger, was identified as an effector of Rab4, a small GTPase that plays a role in the endocytotic pathway in all cell types [PMID:11172003]. RUFY1 exists three isoforms and molecular weight of isoforms are 80 kDa, 69 kDa and 45 kDa.

## Publications notables

Autrice	Pubmed ID	Journal	Application
Meng Shi	30478271	Nat Commun	IF
Christine A Phillips-Krawczak	25355947	Mol Biol Cell	WB, IF
Qiaoming Zhi	30407695	Cancer Sci	CoIP

## Stockage

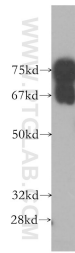
**Stockage:**  
Stocker à -20°C. Stable pendant un an après l'expédition.  
**Tampon de stockage:**  
PBS avec azoture de sodium à 0,02 % et glycérol à 50 % pH 7,3  
L'aliquotage n'est pas nécessaire pour le stockage à -20C

\*\*\* Les 20ul contiennent 0,1% de BSA.

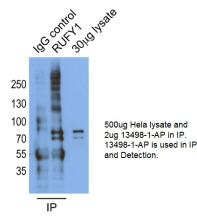
For technical support and original validation data for this product please contact:  
T: 1 (888) 4PTGLAB (1-888-478-4522) (toll free in USA), or 1(312) 455-8498 (outside USA)  
E: proteintech@ptglab.com  
W: ptglab.com

This product is exclusively available under Proteintech Group brand and is not available to purchase from any other manufacturer.

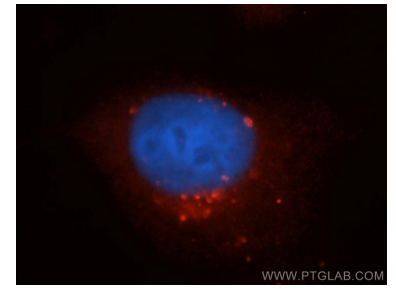
## Données de validation sélectionnées



HeLa cells were subjected to SDS PAGE followed by western blot with 13498-1-AP (RUFY1 antibody) at dilution of 1:1000 incubated at room temperature for 1.5 hours.



IP result of anti-RUFY1 (13498-1-AP for IP and Detection).



Immunofluorescent analysis of HeLa cells, using RUFY1 antibody 13498-1-AP at 1:50 dilution and Rhodamine-labeled goat anti-rabbit IgG (red). Blue pseudocolor = DAPI (fluorescent DNA dye).