

À des fins de recherche uniquement

# Anticorps Polyclonal de lapin anti-MTUS1



Numéro de catalogue: 13436-1-AP

Phare

4 Publications

## Informations de base

Numéro de catalogue:

13436-1-AP

Taille:

150ul, Concentration: 850 µg/ml by Nanodrop and 330 µg/ml by Bradford method using BSA as the standard;

Hôte:

Lapin

Isotype:

IgG

Immunogen Catalog Number:

AG4242

Numéro d'acquisition GenBank:

BC033842

Identification du gène (NCBI):

57509

Nom complet:

mitochondrial tumor suppressor 1

MW calculé

51 kDa, 141 kDa

MW observés:

40-48 kDa, 80 kDa, 110-120 kDa, 270-280 kDa

Méthode de purification:

Purification par affinité contre l'antigène

Dilutions recommandées:

WB 1:500-1:1000

IP 0.5-4.0 ug for IP and 1:500-1:1000 for WB

IHC 1:300-1:1200

IF 1:20-1:200

## Applications

Applications testées:

IF, IHC, IP, WB, ELISA

Demandes citées:

ColP, IF, WB

Spécificité de l'espèce:

Humain, rat, souris

Espèces citées:

Humain, souris

Contrôles positifs:

WB : cellules Jurkat, cellules K-562, tissu cérébral de souris, tissu cérébral humain

IP : tissu cérébral de souris,

IHC : tissu de cancer du sein humain, tissu de cancer de la thyroïde humain

IF : cellules PC-3,

**Remarque-IHC: il est suggéré de démasquer l'antigène avec un tampon de TE buffer pH 9,0; (\*) A défaut, 'le démasquage de l'antigène peut être 'effectué avec un tampon citrate pH 6,0.**

## Informations générales

MTUS1, also named as ATBP, ATIP, GK1, KIAA1288 and MTS1, belongs to the MTUS1 family. It cooperates with AGTR2 to inhibit ERK2 activation and cell proliferation. MTUS1 may be required for AGTR2 cell surface expression. Together with PTPN6, induces UBE2V2 expression upon angiotensin-II stimulation. Isoform 1 inhibits breast cancer cell proliferation, delays the progression of mitosis by prolonging metaphase and reduces tumor growth. MTUS1 up-regulation during cellular transition from proliferation to quiescence and differentiation. It is a potential tumor suppressor gene located at chromosome 8p21.3.22, near marker D8S254. According to the functional data and intracellular localization, MTUS1 also named as mitochondrial tumor suppressor gene 1 (MTSG1). One main feature common to all ATIP members is the presence of a large C-terminal coiled-coil domain that allows homo- and hetero-dimerization of these proteins. (PMID:12692079, 15123706). The antibody can recognize all the isoforms except isoform 5(85-90 kDa). The antibody tested HomoDimer isoforms (80kd/110-120/280kd) in Jurkat cell.

## Publications notables

Autrice	Pubmed ID	Journal	Application
Ruili Dang	34529881	Aging Cell	WB
Yinfang Wang	27789289	J Mol Cell Cardiol	WB,IF
Yinfang Wang	29558204	FASEB J	WB,IF,ColP

## Stockage

Stockage:

Stocker à -20°C. Stable pendant un an après l'expédition.

Tampon de stockage:

PBS avec azoture de sodium à 0,02 % et glycérol à 50 % pH 7,3

L'aliquotage n'est pas nécessaire pour le stockage à -20C

\*\*\* Les 20ul contiennent 0,1% de BSA.

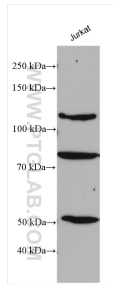
For technical support and original validation data for this product please contact:

T: 1 (888) 4PTGLAB (1-888-478-4522) (toll free in USA), or 1(312) 455-8498 (outside USA)

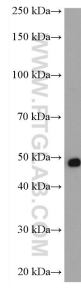
E: proteintech@ptglab.com  
W: ptglab.com

This product is exclusively available under Proteintech Group brand and is not available to purchase from any other manufacturer.

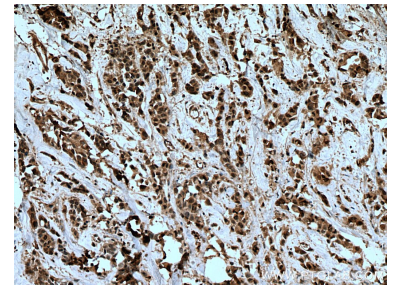
## Données de validation sélectionnées



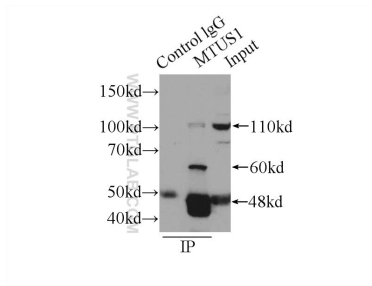
Jurkat lysates were subjected to SDS PAGE followed by western blot with 13436-1-AP (MTUS1 antibody) at dilution of 1:800 incubated at room temperature for 1.5 hours.



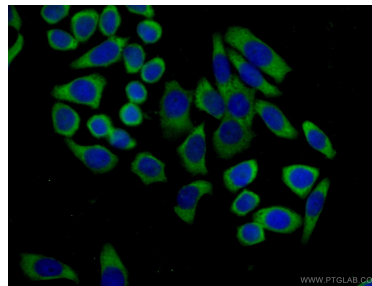
mouse brain tissue were subjected to SDS PAGE followed by western blot with 13436-1-AP (MTUS1 antibody) at dilution of 1:300 incubated at room temperature for 1.5 hours.



Immunohistochemical analysis of paraffin-embedded human breast cancer tissue slide using 13436-1-AP (MTUS1 antibody) at dilution of 1:600 (under 10x lens). Heat mediated antigen retrieval with Tris-EDTA buffer (pH 9.0).



IP Result of anti-MTUS1 (IP:13436-1-AP, 4ug; Detection:13436-1-AP 1:500) with mouse brain tissue lysate 6000ug.



Immunofluorescent analysis of (-20°C Ethanol) fixed PC-3 cells using 13436-1-AP (MTUS1 antibody) at dilution of 1:50 and Alexa Fluor 488-conjugated AffiniPure Goat Anti-Rabbit IgG(H+L).