

À des fins de recherche uniquement

Anticorps Polyclonal de lapin anti-ITPKB



Numéro de catalogue: 12816-1-AP

Phare

6 Publications

Informations de base

Numéro de catalogue: 12816-1-AP	Numéro d'acquisition GenBank: BC015009	Méthode de purification: Purification par affinité contre l'antigène
Taille: 150ul, Concentration: 700 µg/ml by Nanodrop and 340 µg/ml by Bradford method using BSA as the standard;	Identification du gène (NCBI): 3707	Dilutions recommandées: WB 1:500-1:1000 IHC 1:20-1:200
Hôte: Lapin	Nom complet: inositol 1,4,5-trisphosphate 3-kinase B	
Isotype: IgG	MW calculé: 946 aa, 102 kDa	
Immunogen Catalog Number: AG3456	MW observés: 102-110 kDa	

Applications

Applications testées:

IHC, WB, ELISA

Demandes citées:

IF, IHC, WB

Spécificité de l'espèce:

Humain, rat, souris

Espèces citées:

Humain, souris

Remarque-IHC: il est suggéré de démasquer l'antigène avec un tampon de TE buffer pH 9,0; (*) A défaut, le démasquage de l'antigène peut être effectué avec un tampon citrate pH 6,0.

Contrôles positifs:

WB : tissu cérébral de souris, cellules K-562, tissu cérébral de rat, tissu de thymus de souris, tissu pulmonaire de souris

IHC : tissu de cancer du col de l'utérus humain, tissu cérébral de souris, tissu pulmonaire humain

Informations générales

Inositol 1,4,5-trisphosphate 3-kinase isoform B (ITPKB) is also named as IP3KB and possesses important roles in the development of immune cells. IP3KB can be targeted to multiple cellular compartments, among them nuclear localization and binding in close proximity to the plasma membrane. The B isoform is the only IP3K that is almost ubiquitously expressed in mammalian cells (PMID:21148483). Three isoforms of IP3KB occur in mammals, which are distinguished by different molecular masses, sensitivity to Ca²⁺/CaM (calmodulin), intracellular distribution and tissue expression (PMID:16173920). ITPKB can be cleaved into many fragments, this antibody can recognize the N-terminal peptide fragment. (PMID:15130091)

Publications notables

Autrice	Pubmed ID	Journal	Application
Xiulei Mo	35512704	Cell	WB
Laura Marongiu	33785611	Sci Signal	IHC, WB
Abduarahman Almutairi	31987846	J Allergy Clin Immunol	WB

Stockage

Stockage:

Stocker à -20°C. Stable pendant un an après l'expédition.

Tampon de stockage:

PBS avec azoture de sodium à 0,02 % et glycérol à 50 % pH 7,3

L'aliquotage n'est pas nécessaire pour le stockage à -20C

*** Les 20ul contiennent 0,1% de BSA.

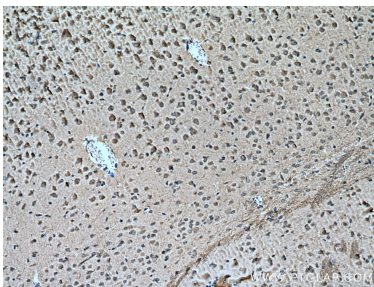
For technical support and original validation data for this product please contact:

T: 1 (888) 4PTGLAB (1-888-478-4522) (toll free in USA), or 1(312) 455-8498 (outside USA)

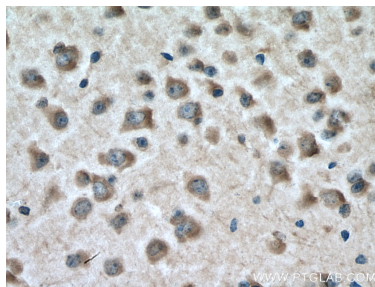
E: proteintech@ptglab.com
W: ptglab.com

This product is exclusively available under Proteintech Group brand and is not available to purchase from any other manufacturer.

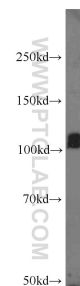
Données de validation sélectionnées



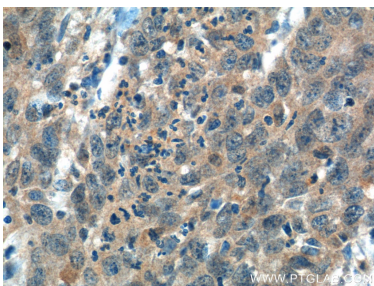
Immunohistochemical analysis of paraffin-embedded mouse brain tissue slide using 12816-1-AP (ITPKB antibody) at dilution of 1:200 (under 10x lens). Heat mediated antigen retrieval with Tris-EDTA buffer (pH 9.0).



Immunohistochemical analysis of paraffin-embedded mouse brain tissue slide using 12816-1-AP (ITPKB antibody) at dilution of 1:200 (under 40x lens). Heat mediated antigen retrieval with Tris-EDTA buffer (pH 9.0).



mouse brain tissue were subjected to SDS PAGE followed by western blot with 12816-1-AP (ITPKB antibody) at dilution of 1:500 incubated at room temperature for 1.5 hours.



Immunohistochemical analysis of paraffin-embedded human cervical cancer tissue slide using 12816-1-AP (ITPKB Antibody) at dilution of 1:50 (under 40x lens).