

À des fins de recherche uniquement

# Anticorps Polyclonal de lapin anti-IMP3



Numéro de catalogue: 12750-1-AP

Phare

1 Publications

## Informations de base

Numéro de catalogue:  
12750-1-AP

Taille:  
150ul, Concentration: 170 µg/ml by  
Nanodrop and 160 µg/ml by Bradford  
method using BSA as the standard;

Hôte:  
Lapin

Isotype:  
IgG

Immunogen Catalog Number:  
AG3477

Numéro d'acquisition GenBank:  
BC020557

Identification du gène (NCBI):  
55272

Nom complet:  
IMP3, U3 small nucleolar  
ribonucleoprotein, homolog (yeast)

MW calculé  
184 aa, 22 kDa

MW observés:  
22 kDa

Méthode de purification:  
Purification par affinité contre  
l'antigène

Dilutions recommandées:  
WB 1:1000-1:4000  
IP 0.5-4.0 ug for IP and 1:500-1:1000  
for WB  
IF 1:50-1:500

## Applications

Applications testées:  
IF, IP, WB, ELISA

Demandes citées:  
IHC, WB

Spécificité de l'espèce:  
Humain, rat, souris

Espèces citées:  
Humain, souris

Contrôles positifs:

WB : cellules HeLa, cellules MCF-7

IP : cellules HeLa,

IF : cellules HeLa,

## Informations générales

IMP U3 small nucleolar ribonucleoprotein 3 (IMP3, BRMS2), is a component of U3 small nucleolar ribonucleoprotein complex (U3 snoRNP), has been identified as a participant in pre-rRNA processing for nearly twenty years.

## Publications notables

Autrice	Pubmed ID	Journal	Application
Sonja M Kessler	29163784	Oncotarget	WB,IHC

## Stockage

Stockage:

Stocker à -20°C. Stable pendant un an après l'expédition.

Tampon de stockage:

PBS avec azoture de sodium à 0,02 % et glycérol à 50 % pH 7,3

L'aliquotage n'est pas nécessaire pour le stockage à -20C

\*\*\* Les 20ul contiennent 0,1% de BSA.

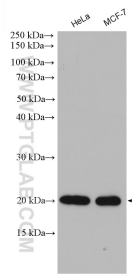
For technical support and original validation data for this product please contact:

T: 1 (888) 4PTGLAB (1-888-478-4522) (toll free  
in USA), or 1(312) 455-8498 (outside USA)

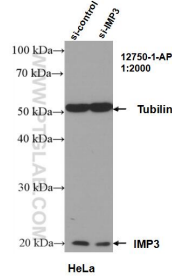
E: proteintech@ptglab.com  
W: ptglab.com

This product is exclusively available under Proteintech Group brand and is not available to purchase from any other manufacturer.

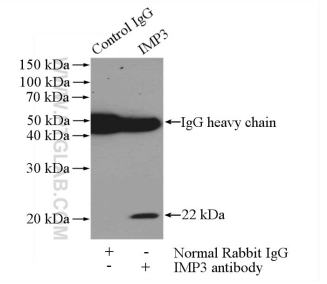
## Données de validation sélectionnées



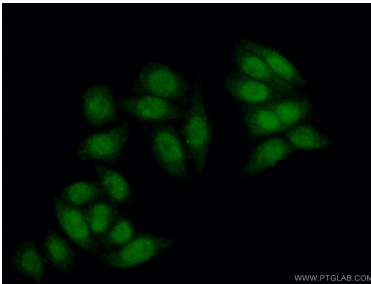
Various lysates were subjected to SDS PAGE followed by western blot with 12750-1-AP (IMP3 antibody) at dilution of 1:1000 incubated at room temperature for 1.5 hours.



WB result of IMP3 antibody (12750-1-AP; 1:2000; incubated at room temperature for 1.5 hours) with sh-Control and sh-IMP3 transfected HeLa cells.



IP Result of anti-IMP3 (IP:12750-1-AP, 3ug; Detection:12750-1-AP 1:500) with HeLa cells lysate 1200ug.



Immunofluorescent analysis of (10% Formaldehyde) fixed HeLa cells using 12750-1-AP (IMP3 antibody) at dilution of 1:50 and Alexa Fluor 488-conjugated AffiniPure Goat Anti-Rabbit IgG(H+L).