

À des fins de recherche uniquement

Anticorps Polyclonal de lapin anti-CIAPIN1



Numéro de catalogue: 12638-1-AP

Phare

5 Publications

Informations de base

Numéro de catalogue: 12638-1-AP	Numéro d'acquisition GenBank: BC024196	Méthode de purification: Purification par affinité contre l'antigène
Taille: 150ul, Concentration: 500 µg/ml by Nanodrop and 313 µg/ml by Bradford method using BSA as the standard;	Identification du gène (NCBI): 57019	Dilutions recommandées: WB 1:500-1:3000 IHC 1:50-1:500 IF 1:10-1:100
Hôte: Lapin	Nom complet: cytokine induced apoptosis inhibitor 1	
Isotype: IgG	MW calculé 312 aa, 34 kDa	
Immunogen Catalog Number: AG3333	MW observés: 34 kDa	

Applications

Applications testées:

IF, IHC, WB, ELISA

Demandes citées:

WB

Spécificité de l'espèce:

Humain, rat, souris

Espèces citées:

Humain, rat, souris

Remarque-IHC: il est suggéré de démasquer l'antigène avec un tampon de TE buffer pH 9,0; (*) À défaut, 'le démasquage de l'antigène peut être effectué avec un tampon citrate pH 6,0.

Contrôles positifs:

WB : cellules BxPC-3, cellules HeLa, cellules Jurkat, cellules K-562, tissu cérébral de souris, tissu hépatique de souris

IHC : tissu cardiaque humain,

IF : cellules HeLa,

Informations générales

The cytokine-induced anti-apoptotic molecule (CIAPIN1, or DRE2) had been found to be a differentially-expressed gene involved in a variety of cancers, and it was also considered as a candidate tumor suppressor gene in gastric cancer, renal cancer and liver cancer. CIAPIN1 plays an important role in the differentiation of colorectal cancer (CRC) cells, and the differential expression of CIAPIN1 in CRC was closely related to prognosis. CIAPIN1 might play an important role in esophageal carcinogenesis, and it could be considered as a valuable prognostic indicator in esophageal squamous cell carcinoma (ESCC).

Publications notables

Autrice	Pubmed ID	Journal	Application
Zhiwei Chen	34386429	Front Oncol	WB
Ki Soon Kim	29309586	Hum Mol Genet	WB
Nunziata Maio	30765471	Haematologica	WB

Stockage

Stockage:

Stocker à -20°C. Stable pendant un an après l'expédition.

Tampon de stockage:

PBS avec azoture de sodium à 0,02 % et glycérol à 50 % pH 7,3

L'aliquotage n'est pas nécessaire pour le stockage à -20C

*** Les 20ul contiennent 0,1% de BSA.

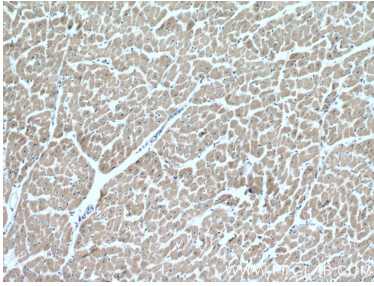
For technical support and original validation data for this product please contact:

T: 1 (888) 4PTGLAB (1-888-478-4522) (toll free in USA), or 1(312) 455-8498 (outside USA)

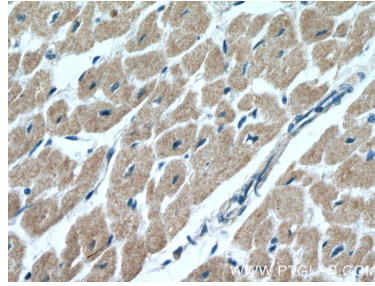
E: proteintech@ptglab.com
W: ptglab.com

This product is exclusively available under Proteintech Group brand and is not available to purchase from any other manufacturer.

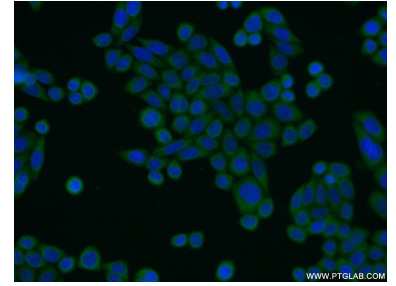
Données de validation sélectionnées



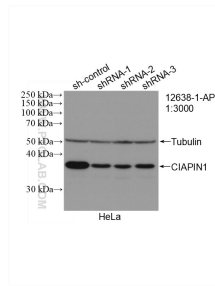
Immunohistochemical analysis of paraffin-embedded human heart tissue slide using 12638-1-AP (CIAPIN1 antibody) at dilution of 1:200 (under 10x lens).



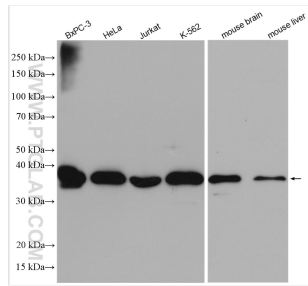
Immunohistochemical analysis of paraffin-embedded human heart tissue slide using 12638-1-AP (CIAPIN1 antibody) at dilution of 1:200 (under 40x lens).



Immunofluorescent analysis of HeLa cells using 12638-1-AP (CIAPIN1 antibody) at dilution of 1:25 and Alexa Fluor 488-conjugated AffiniPure Goat Anti-Rabbit IgG(H+L).



WB result of CIAPIN1 antibody (12638-1-AP; 1:3000; incubated at room temperature for 1.5 hours) with sh-Control and sh-CIAPIN1 transfected HeLa cells.



Various lysates were subjected to SDS PAGE followed by western blot with 12638-1-AP (CIAPIN1 antibody) at dilution of 1:1500 incubated at room temperature for 1.5 hours.