

À des fins de recherche uniquement

# Anticorps Polyclonal de lapin anti-CCT8



Numéro de catalogue: 12263-1-AP

13 Publications

## Informations de base

Numéro de catalogue:  
12263-1-AP

Taille:  
150ul, Concentration: 200 µg/ml by  
Nanodrop and 147 µg/ml by Bradford  
method using BSA as the standard;

Hôte:  
Lapin

Isotype:  
IgG

Immunogen Catalog Number:  
AG2926

Numéro d'acquisition GenBank:  
BC012584

Identification du gène (NCBI):  
10694

Nom complet:  
chaperonin containing TCP1, subunit  
8 (theta)

MW calculé  
548 aa, 60 kDa

MW observés:  
60 kDa

Méthode de purification:  
Purification par affinité contre  
l'antigène

Dilutions recommandées:  
WB 1:2000-1:10000  
IP 0.5-4.0 ug for IP and 1:500-1:1000  
for WB  
IF 1:50-1:500

## Applications

Applications testées:  
IF, IP, WB, ELISA

Demandes citées:  
IF, IP, WB

Spécificité de l'espèce:  
Humain, rat, souris

Espèces citées:  
Humain, souris

Contrôles positifs:

WB : cellules A431, cellules COLO 320, cellules HeLa,  
cellules Jurkat, cellules Raji, tissu rénal de souris

IP : cellules Jurkat,

IF : cellules MCF-7,

## Informations générales

CCT8, also named as C21orf112, CCTQ, KIAA0002, CCT-theta, TCP-1-theta and NY-REN-15, belongs to the TCP-1 chaperonin family. It is a molecular chaperone; assists the folding of proteins upon ATP hydrolysis. As part of the BBS/CCT complex, CCT8 may play a role in the assembly of BBSome, a complex involved in ciliogenesis regulating transports vesicles to the cilia. Known to play a role, in vitro, in the folding of actin and tubulin.(PMID:20080638)

## Publications notables

Autrice	Pubmed ID	Journal	Application
Alireza Noormohammadi	27892468	Nat Commun	WB
S Kragness	35771867	PLoS One	WB
Sandhya Gopal	30029015	Virology	IP

## Stockage

Stockage:

Stocker à -20°C. Stable pendant un an après l'expédition.

Tampon de stockage:

PBS avec azoture de sodium à 0,02 % et glycérol à 50 % pH 7,3

L'aliquotage n'est pas nécessaire pour le stockage à -20C

\*\*\* Les 20ul contiennent 0,1% de BSA.

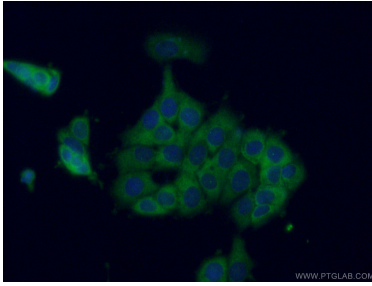
For technical support and original validation data for this product please contact:

T: 1 (888) 4PTGLAB (1-888-478-4522) (toll free  
in USA), or 1(312) 455-8498 (outside USA)

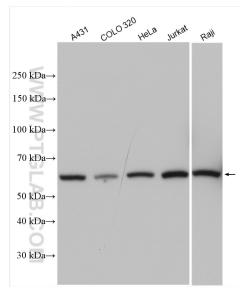
E: proteintech@ptglab.com  
W: ptglab.com

This product is exclusively available under Proteintech Group brand and is not available to purchase from any other manufacturer.

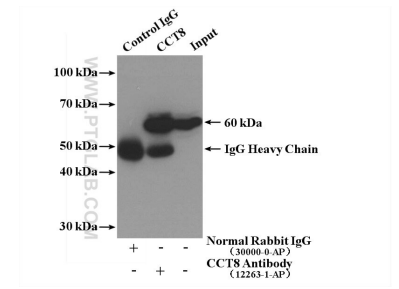
## Données de validation sélectionnées



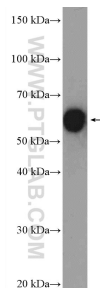
Immunofluorescent analysis of (-20°C Ethanol) fixed MCF-7 cells using 12263-1-AP (CCT8 antibody) at dilution of 1:50 and Alexa Fluor 488-Conjugated AffiniPure Goat Anti-Rabbit IgG(H+L).



Various lysates were subjected to SDS PAGE followed by western blot with 12263-1-AP (CCT8 antibody) at dilution of 1:5000 incubated at room temperature for 1.5 hours.



IP result of anti-CCT8 (IP:12263-1-AP, 4ug; Detection:12263-1-AP 1:500) with Jurkat cells lysate 3160 ug.



mouse kidney tissue were subjected to SDS PAGE followed by western blot with 12263-1-AP (CCT8 Antibody) at dilution of 1:1500 incubated at room temperature for 1.5 hours.