

À des fins de recherche uniquement

# Anticorps Polyclonal de lapin anti-NOL8



Numéro de catalogue: 12043-1-AP

## Informations de base

Numéro de catalogue:  
12043-1-AP

Taille:  
150ul, Concentration: 350 µg/ml by  
Nanodrop and 233 µg/ml by Bradford  
method using BSA as the standard;

Hôte:  
Lapin

Isotype:  
IgG

Immunogen Catalog Number:  
AG2672

Numéro d'acquisition GenBank:  
BC013788

Identification du gène (NCBI):  
55035

Nom complet:  
nucleolar protein 8

MW calculé  
132 kDa

MW observés:  
150 kDa

Méthode de purification:  
Purification par affinité contre  
l'antigène

Dilutions recommandées:  
WB 1:2000-1:12000  
IF 1:10-1:100

## Applications

Applications testées:  
IF, WB, ELISA

Spécificité de l'espèce:  
Humain, rat, souris

Contrôles positifs:

WB : cellules COLO 320, cellules Jurkat

IF : cellules HepG2,

## Informations générales

NOL8 (Nucleolar Protein 8) plays an essential role in the survival of diffuse-type gastric cancer cells, and knocking down NOL8 promoted cell apoptosis. The structure analysis suggested that NOL8 contains a RNA binding motif, which was consistent with the study that NOL8 interacted with DEAD-box RNA helicase

## Stockage

Stockage:

Stocker à -20°C. Stable pendant un an après l'expédition.

Tampon de stockage:

PBS avec azoture de sodium à 0,02 % et glycérol à 50 % pH 7,3

L'aliquotage n'est pas nécessaire pour le stockage à -20C

**\*\*\* Les 20ul contiennent 0,1% de BSA.**

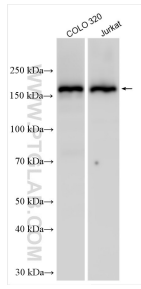
For technical support and original validation data for this product please contact:

T: 1 (888) 4PTGLAB (1-888-478-4522) (toll free  
in USA), or 1(312) 455-8498 (outside USA)

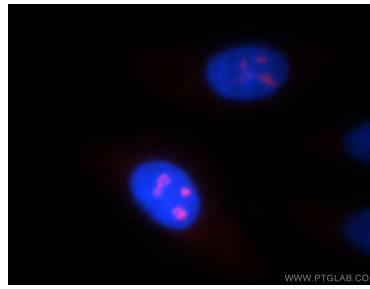
E: [proteintech@ptglab.com](mailto:proteintech@ptglab.com)  
W: [ptglab.com](http://ptglab.com)

This product is exclusively available under Proteintech Group brand and is not available to purchase from any other manufacturer.

## Données de validation sélectionnées



Various lysates were subjected to SDS PAGE followed by western blot with 12043-1-AP (NOL8 antibody) at dilution of 1:6000 incubated at room temperature for 1.5 hours.



Immunofluorescent analysis of HepG2 cells, using NOL8 antibody 12043-1-AP at 1:25 dilution and Rhodamine-labeled goat anti-rabbit IgG (red). Blue pseudocolor = DAPI (fluorescent DNA dye).