

À des fins de recherche uniquement

# Anticorps Polyclonal de lapin anti-MALT1



Numéro de catalogue: 11660-1-AP

5 Publications

## Informations de base

Numéro de catalogue: 11660-1-AP	Numéro d'acquisition GenBank: BC030143	Méthode de purification: Purification par affinité contre l'antigène
Taille: 150ul , Concentration: 400 µg/ml by Nanodrop and 260 µg/ml by Bradford method using BSA as the standard;	Identification du gène (NCBI): 10892	Dilutions recommandées: WB 1:500-1:1000 IHC 1:20-1:200 IF 1:10-1:100
Hôte: Lapin	Nom complet: mucosa associated lymphoid tissue lymphoma translocation gene 1	
Isotype: IgG	MW calculé 824 aa, 92 kDa	
Immunogen Catalog Number: AG2182	MW observés: 92-100 kDa	

## Applications

Applications testées:  
FC, IF, IHC, WB, ELISA

Demandes citées:  
CoIP, IF, IHC, WB

Spécificité de l'espèce:  
Humain, rat, souris

Espèces citées:  
Humain, rat, souris

**Remarque-IHC: il est suggéré de démasquer l'antigène avec un tampon de TE buffer pH 9,0; (\*) A défaut, 'le démasquage de l'antigène peut être 'effectué avec un tampon citrate pH 6,0.**

Contrôles positifs:

WB : cellules HeLa, cellules HEK-293, tissu testiculaire de souris

IHC : tissu de lymphome humain,

IF : cellules HepG2,

## Informations générales

Mucosa-associated lymphoid tissue lymphoma translocation protein 1 belongs to caspase-like protein superfamily. MALT1 plays a potential role in the regulation of apoptosis and induces NFκB activation and required for the normal development of B cells and for the activation of the IKK complex. It acts as a caspase and mediates additional functions related to T cell activation, cleaving both the ubiquitin editing enzyme, TNFAIP3, and the C terminus of BCL10. It has two isoforms. Researches showed that inhibition of MALT1 blocks A20 and BCL10 cleavage, reduces NFκB activity, and decreases the expression of NFκB targets BCLXL.

## Publications notables

Autrice	Pubmed ID	Journal	Application
Zhenglin Chang	35246671	Food Funct	IHC
Ke-Hung Tsui	33802402	Biomedicines	IHC
Zi-Mei Peng	36603698	Arch Biochem Biophys	WB

## Stockage

Stockage:  
Stocker à -20°C. Stable pendant un an après l'expédition.

Tampon de stockage:  
PBS avec azoture de sodium à 0,02 % et glycérol à 50 % pH 7,3  
L'aliquotage n'est pas nécessaire pour le stockage à -20C

\*\*\* Les 20ul contiennent 0,1% de BSA.

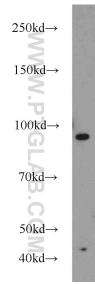
For technical support and original validation data for this product please contact:

T: 1 (888) 4PTGLAB (1-888-478-4522) (toll free in USA), or 1(312) 455-8498 (outside USA)

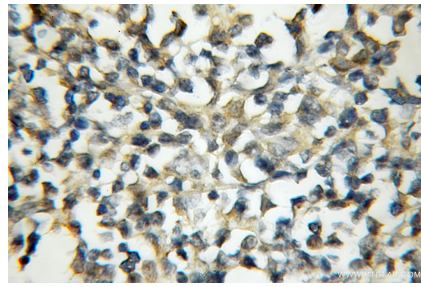
E: proteintech@ptglab.com  
W: ptglab.com

This product is exclusively available under Proteintech Group brand and is not available to purchase from any other manufacturer.

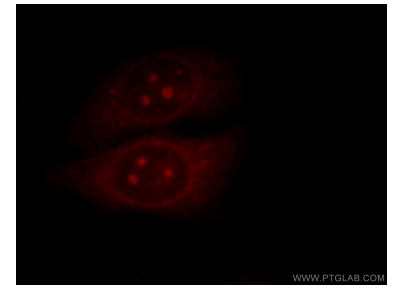
## Données de validation sélectionnées



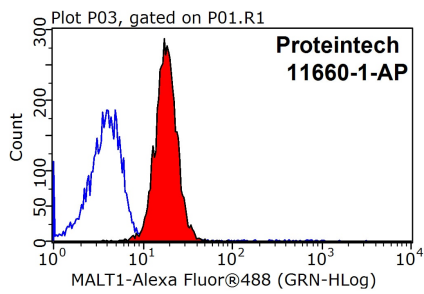
HeLa cells were subjected to SDS PAGE followed by western blot with 11660-1-AP (MALT1 antibody) at dilution of 1:600 incubated at room temperature for 1.5 hours.



Immunohistochemical analysis of paraffin-embedded human lymphoma using 11660-1-AP (MALT1 antibody) at dilution of 1:50 (under 10x lens).



Immunofluorescent analysis of HepG2 cells, using MALT1 antibody 11660-1-AP at 1:25 dilution and Rhodamine-labeled goat anti-rabbit IgG (red).



1X10<sup>6</sup> HeLa cells were stained with 0.2ug MALT1 antibody (11660-1-AP, red) and control antibody (blue). Fixed with 90% MeOH blocked with 3% BSA (30 min). Alexa Fluor 488-conjugated AffiniPure Goat Anti-Rabbit IgG(H+L) with dilution 1:1500.