

À des fins de recherche uniquement

# Anticorps Polyclonal de lapin anti-Gelsolin



Numéro de catalogue: 11644-2-AP

Phare

9 Publications

## Informations de base

Numéro de catalogue: 11644-2-AP	Numéro d'acquisition GenBank: BC026033	Méthode de purification: Purification par affinité contre l'antigène
Taille: 150ul , Concentration: 650 µg/ml by Nanodrop and 333 µg/ml by Bradford method using BSA as the standard;	Identification du gène (NCBI): 2934	Dilutions recommandées: WB 1:2000-1:16000 IHC 1:50-1:500
Hôte: Lapin	Nom complet: gelsolin (amyloidosis, Finnish type)	
Isotype: IgG	MW calculé 782 aa, 86 kDa	
Immunogen Catalog Number: AG2239	MW observés: 87-93 kDa	

## Applications

### Applications testées:

IHC, IP, WB, ELISA

### Demandes citées:

IF, IHC, WB

### Spécificité de l'espèce:

Humain, rat, souris

### Espèces citées:

Humain, souris

**Remarque-IHC: il est suggéré de démasquer l'antigène avec un tampon de TE buffer pH 9.0; (\*) A défaut, 'le démasquage de l'antigène peut être 'effectué avec un tampon citrate pH 6,0.**

### Contrôles positifs:

WB : cellules A549, cellules HeLa, cellules U2OS

IHC : tissu de cancer du côlon humain, tissu de cancer de la prostate humain

## Informations générales

Gelsolin (GSN) is an actin binding protein that regulates actin-severing/depolymerizing in a calcium dependent manner, and acts as a multifunctional regulator for cell metabolism and survival. Gelsolin exists in two isoforms: a cytoplasmic gelsolin (cGSN; 80-90 kDa) and a plasma gelsolin (pGSN; 93 kDa), differing at N terminal residues. Decreased levels of pGSN are strongly associated with human diseases, such as, acute liver injury, major trauma, myocardial infarction, inflammation, lung injury, rheumatoid arthritis, hemodialysis, multiple sclerosis, Alzheimer's disease. Plasma gelsolin can interact with actin and form a complex of 130 kDa (PMID: 6330060, 3030756).

## Publications notables

Autrice	Pubmed ID	Journal	Application
Moyuan Deng	32424991	Adv Healthc Mater	WB
Wu Jun J	23582786	Biomed Pharmacother	WB
Biao Deng	26149653	Gene	WB, IHC

## Stockage

### Stockage:

Stocker à -20°C. Stable pendant un an après l'expédition.

### Tampon de stockage:

PBS avec azoture de sodium à 0,02 % et glycérol à 50 % pH 7,3

L'aliquotage n'est pas nécessaire pour le stockage à -20C

\*\*\* Les 20ul contiennent 0,1% de BSA.

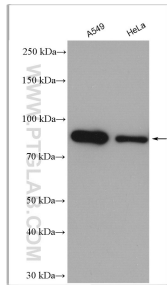
For technical support and original validation data for this product please contact:

T: 1 (888) 4PTGLAB (1-888-478-4522) (toll free in USA), or 1(312) 455-8498 (outside USA)

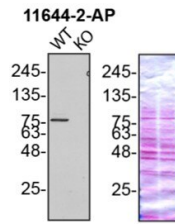
E: proteintech@ptglab.com  
W: ptglab.com

This product is exclusively available under Proteintech Group brand and is not available to purchase from any other manufacturer.

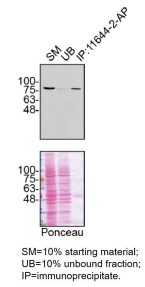
## Données de validation sélectionnées



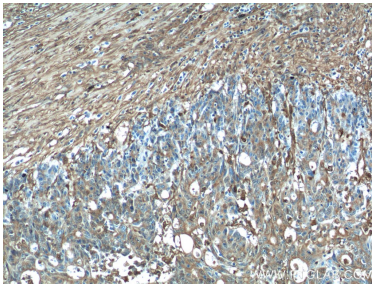
Various lysates were subjected to SDS PAGE followed by western blot with 11644-2-AP (Gelsolin antibody) at dilution of 1:8000 incubated at room temperature for 1.5 hours.



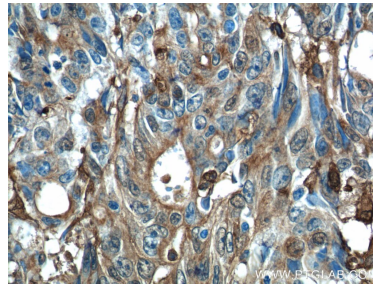
U2OS (WT and GSN KO) lysates prepared with RIPA buffer, 25 µg protein loaded. 11644-2-AP incubated at 1:5000 at 4°C overnight in 5% BSA in TBST. Ponceau stained transfers shown on right. Data provided by YCharOS, an open science company with a mission to validate commercial antibodies to improve scientific reproducibility and transparency.



U2OS lysates prepared and IP of GSN performed using 1.0 µg of 11644-2-AP coupled to protein A-Sepharose beads. The Ponceau stained transfers of each blot are shown. Data provided by YCharOS, an open science company with a mission to validate commercial antibodies to improve scientific reproducibility and transparency.



Immunohistochemical analysis of paraffin-embedded human colon cancer tissue slide using 11644-2-AP (Gelsolin Antibody) at dilution of 1:200 (under 10x lens).



Immunohistochemical analysis of paraffin-embedded human colon cancer tissue slide using 11644-2-AP (Gelsolin Antibody) at dilution of 1:200 (under 40x lens).