

À des fins de recherche uniquement

Anticorps Polyclonal de lapin anti-MIG6; ERRFI1



Numéro de catalogue: 11630-1-AP

Phare

15 Publications

Informations de base

Numéro de catalogue:
11630-1-AP

Taille:
150ul, Concentration: 650 µg/ml by Nanodrop and 273 µg/ml by Bradford method using BSA as the standard;

Hôte:
Lapin

Isotype:
IgG

Immunogen Catalog Number:
AG2202

Numéro d'acquisition GenBank:
BC025337

Identification du gène (NCBI):
54206

Nom complet:
ERBB receptor feedback inhibitor 1

MW calculé
51 kDa

MW observés:
51 kDa

Méthode de purification:
Purification par affinité contre l'antigène

Dilutions recommandées:
WB 1:1000-1:6000
IHC 1:50-1:500
IF 1:200-1:800

Applications

Applications testées:
IF, IHC, WB, ELISA

Demandes citées:
IF, IHC, IP, WB

Spécificité de l'espèce:
Humain, rat, souris

Espèces citées:
Humain, souris

Remarque-IHC: il est suggéré de démasquer l'antigène avec un tampon de TE buffer pH 9,0; (*) A défaut, le démasquage de l'antigène peut être effectué avec un tampon citrate pH 6,0.

Contrôles positifs:

WB: cellules HCT 116, cellules HepG2

IHC: tissu de cancer du côlon humain,

IF: cellules HepG2,

Informations générales

ERRFI1 (the product of mitogen-inducible gene 6, also known as MIG6) is an early response gene encoding a non-kinase scaffold adaptor protein induced by various stimuli such as hormones and stresses. ERRFI1 is considered a negative regulator of EGFR because it can directly bind to EGFR, inhibit the catalytic activity of EGFR, and mediate EGFR lysosomal degradation. ERRFI1 may play important roles in regulating stress response, maintaining homeostasis in tissues like joints or cardiac muscle, and functioning as a tumor suppressor.

Publications notables

Autrice	Pubmed ID	Journal	Application
Mingqing Cui	34608122	Cell Death Discov	WB,IP,IHC,IF
Zixuan Li	28506767	Exp Mol Pathol	WB,IHC
Nai-Jie Fu	35307375	Toxicol Appl Pharmacol	WB

Stockage

Stockage:

Stocker à -20°C. Stable pendant un an après l'expédition.

Tampon de stockage:

PBS avec azoture de sodium à 0,02 % et glycérol à 50 % pH 7,3

L'aliquotage n'est pas nécessaire pour le stockage à -20C

*** Les 20ul contiennent 0,1% de BSA.

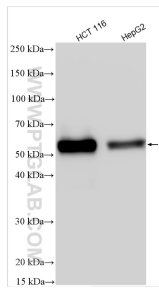
For technical support and original validation data for this product please contact:

T: 1 (888) 4PTGLAB (1-888-478-4522) (toll free in USA), or 1(312) 455-8498 (outside USA)

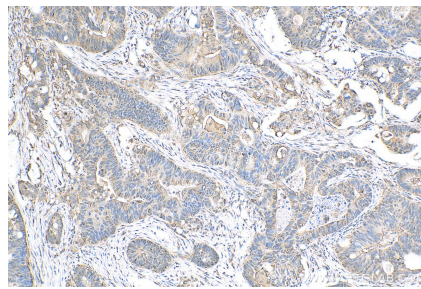
E: proteintech@ptglab.com
W: ptglab.com

This product is exclusively available under Proteintech Group brand and is not available to purchase from any other manufacturer.

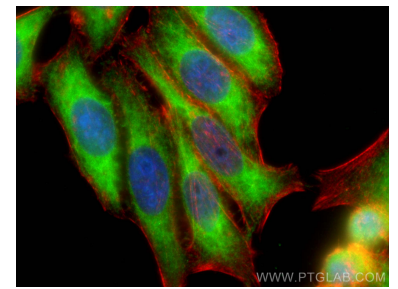
Données de validation sélectionnées



Various lysates were subjected to SDS PAGE followed by western blot with 11630-1-AP (MIG6; ERRF1 antibody) at dilution of 1:3000 incubated at room temperature for 1.5 hours.



Immunohistochemical analysis of paraffin-embedded human colon cancer tissue slide using 11630-1-AP (MIG6; ERRF1 antibody) at dilution of 1:200 (under 10x lens). Heat mediated antigen retrieval with Tris-EDTA buffer (pH 9.0).



Immunofluorescent analysis of (-20°C Ethanol) fixed HepG2 cells using MIG6; ERRF1 antibody (11630-1-AP) at dilution of 1:400 and CoraLite®488-Conjugated AffiniPure Goat Anti-Rabbit IgG(H+L), CL594-Phalloidin (red).