

À des fins de recherche uniquement

Anticorps Polyclonal de lapin anti-PDI



Numéro de catalogue: 11245-1-AP

Phare

45 Publications

Informations de base

Numéro de catalogue:
11245-1-AP

Taille:
150ul, Concentration: 850 µg/ml by Nanodrop and 400 µg/ml by Bradford method using BSA as the standard;

Hôte:
Lapin

Isotype:
IgG

Immunogen Catalog Number:
AG1747

Numéro d'acquisition GenBank:
BC014504

Identification du gène (NCBI):
5034

Nom complet:
prolyl 4-hydroxylase, beta polypeptide

MW calculé:
57 kDa

MW observés:
57 kDa

Méthode de purification:
Purification par affinité contre l'antigène

Dilutions recommandées:
WB 1:500-1:2000
IP 0.5-4.0 ug for IP and 1:1000-1:4000 for WB
IHC 1:50-1:500
IF 1:200-1:800

Applications

Applications testées:
FC, IF, IHC, IP, WB, ELISA

Demandes citées:
FC, IF, IHC, WB

Spécificité de l'espèce:
Humain, rat, souris

Espèces citées:
Humain, porc, rat, souris

Remarque-IHC: il est suggéré de démasquer l'antigène avec un tampon de TE buffer pH 9,0; (*) A défaut, 'le démasquage de l'antigène peut être 'effectué avec un tampon citrate pH 6,0.

Contrôles positifs:

WB : cellules COLO 320, cellules HEK-293, cellules HepG2, tissu cardiaque de souris, tissu cérébral de rat

IP : cellules HepG2,

IHC : tissu de cancer de la prostate humain,

IF : cellules HepG2,

Informations générales

PDIA1(Protein disulfide-isomerase) is also named as ERBA2L, PDI, P4HB, PO4DB. It is a multifunctional protein that catalyzes the formation, breakage and rearrangement of disulfide bonds. In some cell types, it seems to be secreted or associated with the plasma membrane, where it undergoes constant shedding and replacement from intracellular sources. It can exist as homodimer and monomers and homotetramers may also occur(PMID:12095988).

Publications notables

Autrice	Pubmed ID	Journal	Application
Liguo Yang	32943607	Cell Death Dis	IF
Linyu Sun	34555354	Mol Cell	IF
Nirav Florian Chhabra	34487921	Mol Metab	WB

Stockage

Stockage:

Stocker à -20°C. Stable pendant un an après l'expédition.

Tampon de stockage:

PBS avec azoture de sodium à 0,02 % et glycérol à 50 % pH 7,3

L'aliqotage n'est pas nécessaire pour le stockage à -20C

*** Les 20ul contiennent 0,1% de BSA.

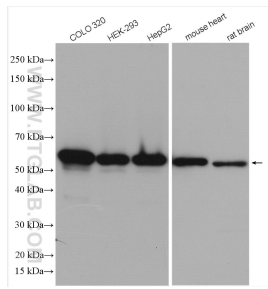
For technical support and original validation data for this product please contact:

T: 1 (888) 4PTGLAB (1-888-478-4522) (toll free in USA), or 1(312) 455-8498 (outside USA)

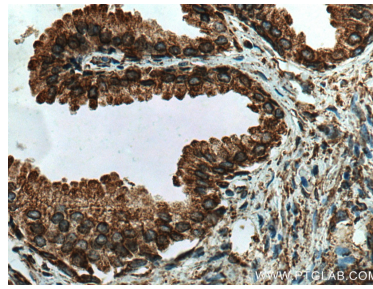
E: proteintech@ptglab.com
W: ptglab.com

This product is exclusively available under Proteintech Group brand and is not available to purchase from any other manufacturer.

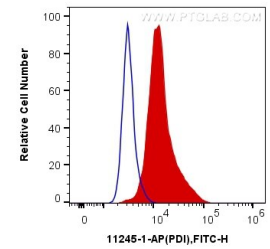
Données de validation sélectionnées



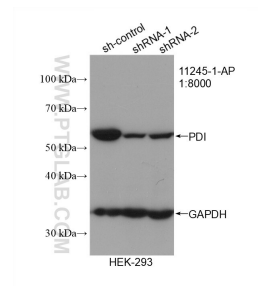
Various lysates were subjected to SDS PAGE followed by western blot with 11245-1-AP (PDI antibody) at dilution of 1:1000 incubated at room temperature for 1.5 hours.



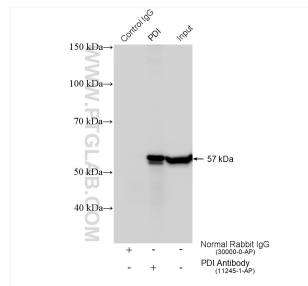
Immunohistochemical analysis of paraffin-embedded human prostate cancer tissue slide using 11245-1-AP (PDI antibody) at dilution of 1:200 (under 40x lens). Heat mediated antigen retrieval with Tris-EDTA buffer (pH 9.0).



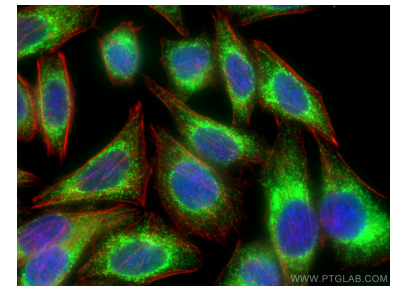
1X10⁶ HeLa cells were intracellularly stained with 0.4 ug Anti-Human PDI (11245-1-AP) and CoraLite®488-Conjugated AffiniPure Goat Anti-Rabbit IgG(H+L) at dilution 1:1000 (red), or 0.4 ug Control Antibody. Cells were fixed with 4% PFA and permeabilized with Flow Cytometry Perm Buffer (PF00011-C).



WB result of PDI antibody (11245-1-AP; 1:8000; incubated at room temperature for 1.5 hours) with sh-Control and sh-PDI transfected HEK-293 cells.



IP result of anti-PDI (IP:11245-1-AP, 4ug; Detection:11245-1-AP 1:2000) with HepG2 cells lysate 2600 ug.



Immunofluorescent analysis of (-20°C Ethanol) fixed HepG2 cells using PDI antibody (11245-1-AP) at dilution of 1:400 and CoraLite®488-Conjugated AffiniPure Goat Anti-Rabbit IgG(H+L), CL594-Phalloidin (red). DAPI (blue).