

À des fins de recherche uniquement

Anticorps Polyclonal de lapin anti-UCP2



Numéro de catalogue: 11081-1-AP

Phare

56 Publications

Informations de base

Numéro de catalogue:
11081-1-AP

Taille:
150ul, Concentration: 400 µg/ml by Nanodrop and 300 µg/ml by Bradford method using BSA as the standard;

Hôte:
Lapin

Isotype:
IgG

Immunogen Catalog Number:
AG1551

Numéro d'acquisition GenBank:
BC011737

Identification du gène (NCBI):
7351

Nom complet:
uncoupling protein 2 (mitochondrial, proton carrier)

MW calculé
33 kDa

MW observés:
28-30 kDa

Méthode de purification:
Purification par affinité contre l'antigène

Dilutions recommandées:
WB 1:500-1:2000
IHC 1:50-1:500

Applications

Applications testées:
IHC, WB, ELISA

Demandes citées:
IF, IHC, WB

Spécificité de l'espèce:
Humain, rat, souris

Espèces citées:
Humain, porc, rat, souris

Remarque-IHC: il est suggéré de démasquer l'antigène avec un tampon de TE buffer pH 9,0; (*) A défaut, 'le démasquage de l'antigène peut être effectué avec un tampon citrate pH 6,0.

Contrôles positifs:

WB : tissu de muscle squelettique de rat, tissu cardiaque de souris, tissu de muscle squelettique de souris, tissu splénique de souris

IHC : tissu de cancer du col de l'utérus humain, tissu de cancer du côlon humain, tissu de cirrhose hépatique humaine, tissu de muscle squelettique humain, tissu hépatique humain, tissu ovarien humain

Informations générales

UCP2 (uncoupling protein 2) is a member of the mitochondrial carrier protein super family located in the mitochondrial inner membrane. The UCPs differ greatly in tissue distribution: UCP1 is expressed only in brown adipose; UCP3 preferentially in skeletal muscle, brown adipose and heart; UCP4 and UCP5 mainly in the nervous system (18167556). In contrast, UCP2 has a broad distribution and is implicated in a wide range of pathophysiological processes, including diabetes and cancer. This antibody detect a band around 28-33 kDa corresponding to UCP2 protein in mouse liver, skeletal muscle and pancreas. Some upper and lower bands also were observed due to the dimer formation and degradation of the UCP2 protein (20103532). This antibody was raised against the full-length UCP2 protein and may cross-react with UCP3. It is notable that UCP2 is known to have a very short half-life less than 1 hour (17240372). It is strongly recommended that fresh-made lysate be used for western blot assays.

Publications notables

Autrice	Pubmed ID	Journal	Application
Hong Zhong	30235442	Cell Physiol Biochem	WB
María Rodríguez-Hidalgo	30228311	Sci Rep	WB
Shilong Zhang	33013386	Front Pharmacol	WB

Stockage

Stockage:

Stocker à -20°C. Stable pendant un an après l'expédition.

Tampon de stockage:

PBS avec azoture de sodium à 0,02 % et glycérol à 50 % pH 7,3

L'aliquotage n'est pas nécessaire pour le stockage à -20C

*** Les 20ul contiennent 0,1% de BSA.

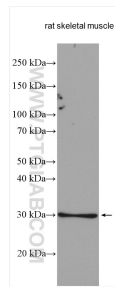
For technical support and original validation data for this product please contact:

T: 1 (888) 4PTGLAB (1-888-478-4522) (toll free in USA), or 1(312) 455-8498 (outside USA)

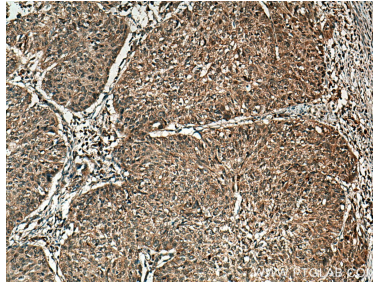
E: proteintech@ptglab.com
W: ptglab.com

This product is exclusively available under Proteintech Group brand and is not available to purchase from any other manufacturer.

Données de validation sélectionnées



Rat skeletal muscle lysates were subjected to SDS PAGE followed by western blot with 11081-1-AP (UCP2 antibody) at dilution of 1:1000 incubated at room temperature for 1.5 hours.



Immunohistochemical analysis of paraffin-embedded human cervical cancer tissue slide using 11081-1-AP (UCP2 antibody) at dilution of 1:200 (under 10x lens). Heat mediated antigen retrieval with Tris-EDTA buffer (pH 9.0).