

À des fins de recherche uniquement

Anticorps Polyclonal de lapin anti-TPM2



Numéro de catalogue: 11038-1-AP

Phare

2 Publications

Informations de base

Numéro de catalogue:
11038-1-AP

Taille:
150ul, Concentration: 300 µg/ml by Nanodrop and 200 µg/ml by Bradford method using BSA as the standard;

Hôte:
Lapin

Isotype:
IgG

Immunogen Catalog Number:
AG1508

Numéro d'acquisition GenBank:
BC011776

Identification du gène (NCBI):
7169

Nom complet:
tropomyosin 2 (beta)

MW calculé
33 kDa

MW observés:
29-33 kDa

Méthode de purification:
Purification par affinité contre l'antigène

Dilutions recommandées:
WB 1:1000-1:4000
IP 0.5-4.0 ug for IP and 1:500-1:1000 for WB
IHC 1:50-1:500
IF 1:50-1:500

Applications

Applications testées:
IF, IHC, IP, WB, ELISA

Demandes citées:
IHC, IP, WB

Spécificité de l'espèce:
Humain, rat, souris

Espèces citées:
Humain, souris

Remarque-IHC: il est suggéré de démasquer l'antigène avec un tampon de TE buffer pH 9,0; (*) A défaut, 'le démasquage de l'antigène peut être 'effectué avec un tampon citrate pH 6,0.

Contrôles positifs:

WB : cellules HT-1080, cellules HeLa, muscle squelettique de rat, muscle squelettique de souris

IP : tissu de muscle squelettique de souris,

IHC : tissu de cancer du sein humain, tissu cardiaque de souris, tissu cardiaque humain, tissu de muscle squelettique humain

IF : cellules HepG2,

Informations générales

TPM2, also named as TMSB, belongs to the tropomyosin family. It binds to actin filaments in muscle and non-muscle cells. TPM2 plays a central role, in association with the troponin complex, in the calcium dependent regulation of vertebrate striated muscle contraction. In non-pi muscle cells, TPM2 is implicated in stabilizing cytoskeleton actin filaments. Defects in TPM2 are the cause of nemaline myopathy type 4 (NEM4) and distal arthrogyposis type 1 (DA1).

Publications notables

Autrice	Pubmed ID	Journal	Application
Ming Luo	37246175	Bone Res	WB
Zonglong Wu	36823643	Cell Biosci	WB,IHC,IP

Stockage

Stockage:

Stocker à -20°C. Stable pendant un an après l'expédition.

Tampon de stockage:

PBS avec azoture de sodium à 0,02 % et glycérol à 50 % pH 7,3

L'aliquotage n'est pas nécessaire pour le stockage à -20C

*** Les 20ul contiennent 0,1% de BSA.

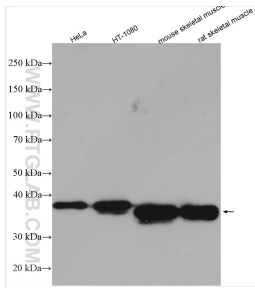
For technical support and original validation data for this product please contact:

T: 1 (888) 4PTGLAB (1-888-478-4522) (toll free in USA), or 1(312) 455-8498 (outside USA)

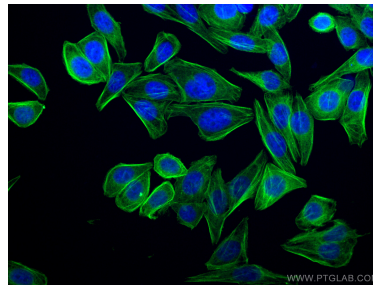
E: proteintech@ptglab.com
W: ptglab.com

This product is exclusively available under Proteintech Group brand and is not available to purchase from any other manufacturer.

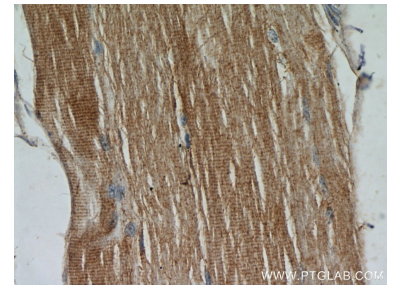
Données de validation sélectionnées



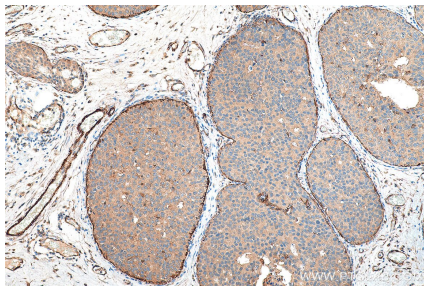
Various lysates were subjected to SDS PAGE followed by western blot with 11038-1-AP (TPM2 antibody) at dilution of 1:2000 incubated at room temperature for 1.5 hours.



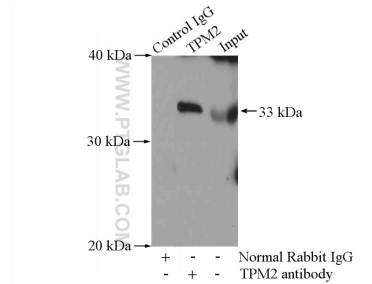
Immunofluorescent analysis of (4% PFA) fixed HepG2 cells using TPM2 antibody (11038-1-AP) at dilution of 1:200 and CoraLite@488-Conjugated AffiniPure Goat Anti-Rabbit IgG(H+L). DAPI (blue).



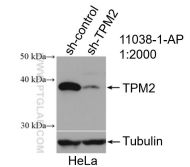
Immunohistochemical analysis of paraffin-embedded human skeletal muscle using 11038-1-AP (TPM2 antibody) at dilution of 1:50 (under 40x lens).



Immunohistochemical analysis of paraffin-embedded human breast cancer tissue slide using 11038-1-AP (TPM2 antibody) at dilution of 1:200 (under 10x lens). Heat mediated antigen retrieval with Tris-EDTA buffer (pH 9.0).



IP Result of anti-TPM2 (IP:11038-1-AP, 4ug; Detection:11038-1-AP 1:500) with mouse skeletal muscle tissue lysate 3600ug.



WB result of TPM2 antibody (11038-1-AP; 1:2000; incubated at room temperature for 1.5 hours) with sh-Control and sh-TPM2 transfected HeLa cells.