

À des fins de recherche uniquement

Anticorps Polyclonal de lapin anti-RAP1B



Numéro de catalogue: 10840-1-AP

11 Publications

Informations de base

Numéro de catalogue: 10840-1-AP	Numéro d'acquisition GenBank: BC000176	Méthode de purification: Purification par affinité contre l'antigène
Taille: 150ul, Concentration: 280 µg/ml by Nanodrop and 233 µg/ml by Bradford method using BSA as the standard;	Identification du gène (NCBI): 5908	Dilutions recommandées: WB 1:500-1:2000 IHC 1:50-1:500
Hôte: Lapin	Nom complet: RAP1B, member of RAS oncogene family	
Isotype: IgG	MW calculé: 21 kDa	
Immunogen Catalog Number: AG1282	MW observés: 21 kDa	

Applications

Applications testées:

IHC, WB, ELISA

Demandes citées:

IP, WB

Spécificité de l'espèce:

Humain, rat, souris

Espèces citées:

Humain, poulet

Remarque-IHC: il est suggéré de démasquer l'antigène avec un tampon de TE buffer pH 9,0; (*) A défaut, 'le démasquage de l'antigène peut être effectué avec un tampon citrate pH 6,0.

Contrôles positifs:

WB : cellules HeLa, cellules A431, cellules A549, cellules C6, cellules HepG2, cellules NIH/3T3, tissu cérébral de souris, tissu cérébral humain, tissu rénal de souris

IHC : tissu de cancer de l'oesophage humain,

Informations générales

RAP1B is a member of the RAS-like small GTP-binding protein superfamily. Members of this family regulate multiple cellular processes including cell adhesion and growth and differentiation. RAP1B localizes to cellular membranes and has been shown to regulate integrin-mediated cell signaling. It also plays a role in regulating outside-in signaling in platelets.

Publications notables

Autrice	Pubmed ID	Journal	Application
Shuo Chen	36056690	J Cell Mol Med	WB
Guanglin Chen	28924375	Int J Med Sci	WB
Chunmei Guo	34026289	J Adv Res	WB

Stockage

Stockage:

Stocker à -20°C. Stable pendant un an après l'expédition.

Tampon de stockage:

PBS avec azoture de sodium à 0,02 % et glycérol à 50 % pH 7,3

L'aliquotage n'est pas nécessaire pour le stockage à -20C

*** Les 20ul contiennent 0,1% de BSA.

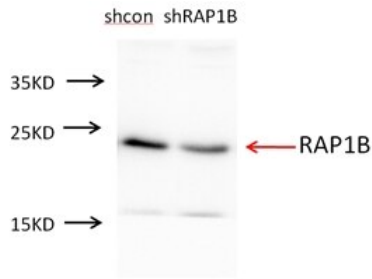
For technical support and original validation data for this product please contact:

T: 1 (888) 4PTGLAB (1-888-478-4522) (toll free in USA), or 1(312) 455-8498 (outside USA)

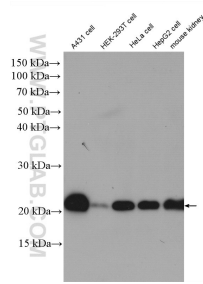
E: proteintech@ptglab.com
W: ptglab.com

This product is exclusively available under Proteintech Group brand and is not available to purchase from any other manufacturer.

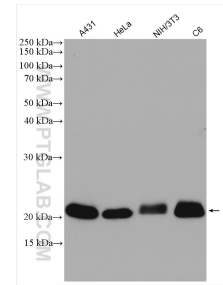
Données de validation sélectionnées



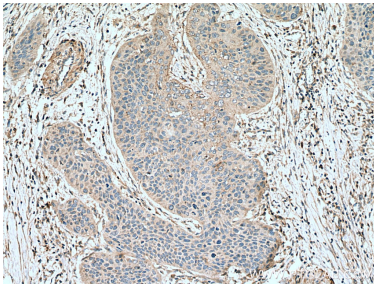
A549 cells were subjected to SDS PAGE followed by western blot with 10840-1-AP (RAP1B antibody) at dilution of 1:300 .



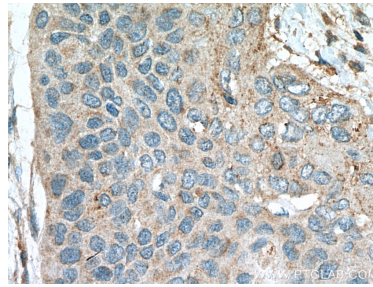
Various lysates were subjected to SDS PAGE followed by western blot with 10840-1-AP (RAP1B antibody) at dilution of 1:1000 incubated at 4 degree celsius over night.



Various lysates were subjected to SDS PAGE followed by western blot with 10840-1-AP (RAP1B antibody) at dilution of 1:1000 incubated at room temperature for 1.5 hours.



Immunohistochemical analysis of paraffin-embedded human oesophagus cancer tissue slide using 10840-1-AP (RAP1B antibody) at dilution of 1:200 (under 10x lens). Heat mediated antigen retrieval with Tris-EDTA buffer (pH 9.0).



Immunohistochemical analysis of paraffin-embedded human oesophagus cancer tissue slide using 10840-1-AP (RAP1B antibody) at dilution of 1:200 (under 40x lens). Heat mediated antigen retrieval with Tris-EDTA buffer (pH 9.0).