

À des fins de recherche uniquement

Anticorps Polyclonal de lapin anti-EXTL3



Numéro de catalogue: 10588-1-AP

2 Publications

Informations de base

Numéro de catalogue: 10588-1-AP	Numéro d'acquisition GenBank: BC006363	Méthode de purification: Purification par affinité contre l'antigène
Taille: 150ul, Concentration: 200 µg/ml by Nanodrop and 133 µg/ml by Bradford method using BSA as the standard;	Identification du gène (NCBI): 2137	Dilutions recommandées: WB 1:500-1:1000 IHC 1:20-1:200 IF 1:50-1:500
Hôte: Lapin	Nom complet: exostoses (multiple)-like 3	
Isotype: IgG	MW calculé: 105 kDa	
Immunogen Catalog Number: AG0936	MW observés: 65 kDa	

Applications

Applications testées: IF, IHC, WB, ELISA	Contrôles positifs: WB : cellules HepG2, cellules Jurkat IHC : tissu de cancer du côlon humain, IF : cellules HepG2,
Demandes citées: IF, WB	
Spécificité de l'espèce: Humain	
Espèces citées: Humain, souris	

Remarque-IHC: il est suggéré de démasquer l'antigène avec un tampon de TE buffer pH 9,0; (*) A défaut, 'le démasquage de l'antigène peut être effectué avec un tampon citrate pH 6,0.

Informations générales

Exostosin like glycosyltransferase 3 (EXTL3), also known as RPR, is located at chromosome 8p21.1 and composed of 919 amino acids, making it the longest member of the EXT family (PMID: 35676258). EXTL3 encodes the glycosyltransferases responsible for the biosynthesis of the backbone structure of heparan sulfate (HS) (PMID: 24128412). EXTL3 has been identified as a receptor molecule for regenerating islet-derived (REG) protein ligands, which have been shown to stimulate islet β -cell growth. Mutations in EXTL3 could lead to skeletal dysplasia, developmental delay, and severe immune deficiency (PMID: 28148688). The predicted molecular weight is 105 kDa, but we detected the band at 65 kDa perhaps due to alternative splicing (PMID: 14618397).

Publications notables

Autrice	Pubmed ID	Journal	Application
Ze-Hua Xu	37531162	Ann N Y Acad Sci	WB,IF
Levetan Claresa S CS	19158046	Endocr Pract	WB,IF

Stockage

Stockage:
Stocker à -20°C. Stable pendant un an après l'expédition.
Tampon de stockage:
PBS avec azoture de sodium à 0,02 % et glycérol à 50 % pH 7,3
L'aliquotage n'est pas nécessaire pour le stockage à -20C

*** Les 20ul contiennent 0,1% de BSA.

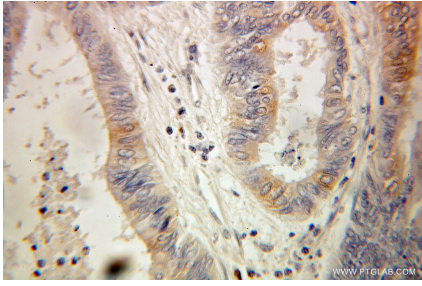
For technical support and original validation data for this product please contact:

T: 1 (888) 4PTGLAB (1-888-478-4522) (toll free in USA), or 1(312) 455-8498 (outside USA)

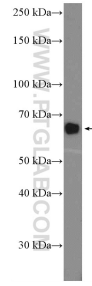
E: proteintech@ptglab.com
W: ptglab.com

This product is exclusively available under Proteintech Group brand and is not available to purchase from any other manufacturer.

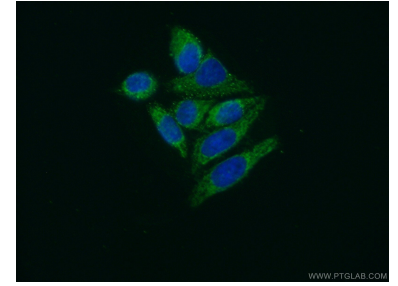
Données de validation sélectionnées



Immunohistochemical analysis of paraffin-embedded human colon cancer using 10588-1-AP (EXTL3 antibody) at dilution of 1:100 (under 25x lens).



HepG2 cells were subjected to SDS PAGE followed by western blot with 10588-1-AP (EXTL3 Antibody) at dilution of 1:600 incubated at room temperature for 1.5 hours.



Immunofluorescent analysis of (10% Formaldehyde) fixed HepG2 cells using 10588-1-AP (EXTL3 antibody) at dilution of 1:50 and Alexa Fluor 488-conjugated AffiniPure Goat Anti-Rabbit IgG(H+L).