

À des fins de recherche uniquement

Anticorps Polyclonal de lapin anti-RRM1



Numéro de catalogue: 10526-1-AP

Phare

46 Publications

Informations de base

Numéro de catalogue:
10526-1-AP

Taille:
150ul, Concentration: 400 µg/ml by Nanodrop and 220 µg/ml by Bradford method using BSA as the standard;

Hôte:
Lapin

Isotype:
IgG

Immunogen Catalog Number:
AG0789

Numéro d'acquisition GenBank:
BC006498

Identification du gène (NCBI):
6240

Nom complet:
ribonucleotide reductase M1

MW calculé
90 kDa

MW observés:
90 kDa

Méthode de purification:
Purification par affinité contre l'antigène

Dilutions recommandées:
WB 1:2000-1:16000
IP 0.5-4.0 ug for IP and 1:500-1:1000 for WB
IHC 1:100-1:600
IF 1:50-1:500

Applications

Applications testées:
FC, IF, IHC, IP, WB, ELISA

Demandes citées:
IF, IHC, IP, WB

Spécificité de l'espèce:
Humain, rat, singe, souris

Espèces citées:
Humain, xénope

Remarque-IHC: il est suggéré de démasquer l'antigène avec un tampon de TE buffer pH 9,0; (*) A défaut, 'le démasquage de l'antigène peut être 'effectué avec un tampon citrate pH 6,0.

Contrôles positifs:

WB : cellules A431, cellules A549, cellules BxPC-3, cellules HEK-293, cellules HeLa, cellules K-562, cellules U-251

IP : cellules K-562,

IHC : tissu de cancer du sein humain, tissu de cancer du poumon humain

IF : cellules HepG2, cellules MCF-7

Informations générales

Ribonucleoside-diphosphate reductase functions as a heterodimer of a large and a small subunits in deoxyribonucleotide synthesis. RRM1 constitutes to the large subunit (R1) of ribonucleotide reductase, and it can either form heterodimer with small subunit RRM or RRM2B(PMID:16376858). RRM1 provides the precursors necessary for DNA synthesis. RRM1 can not be detected in quiescent cells, while its mRNA and protein are present throughout the cell cycle in cycling cells(PMID:8188248). Researches showed that RRM1 is involved in carcinogenesis, tumor progression, and the resistance of non-small-cell lung cancer (NSCLC) to treatment. Low level expression of RRM1 in NSCLC is associated with poor survival(PMID:17314339).

Publications notables

Autrice	Pubmed ID	Journal	Application
Yukio Watanabe	25257380	Histopathology	IHC
Martin Kerr	25224279	Clin Cancer Res	WB
Csaba Tóth	28949378	Int J Mol Med	IHC

Stockage

Stockage:

Stocker à -20°C. Stable pendant un an après l'expédition.

Tampon de stockage:

PBS avec azoture de sodium à 0,02 % et glycérol à 50 % pH 7,3

L'aliquoteage n'est pas nécessaire pour le stockage à -20C

*** Les 20ul contiennent 0,1% de BSA.

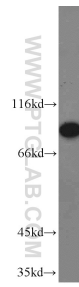
For technical support and original validation data for this product please contact:

T: 1 (888) 4PTGLAB (1-888-478-4522) (toll free in USA), or 1(312) 455-8498 (outside USA)

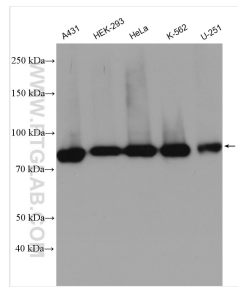
E: proteintech@ptglab.com
W: ptglab.com

This product is exclusively available under Proteintech Group brand and is not available to purchase from any other manufacturer.

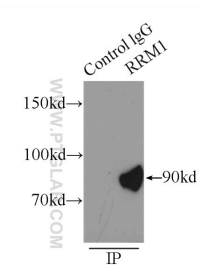
Données de validation sélectionnées



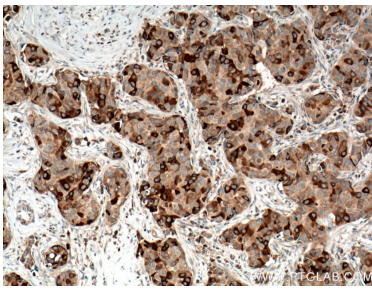
HeLa cells were subjected to SDS PAGE followed by western blot with 10526-1-AP (RRM1 antibody) at dilution of 1:2000 incubated at room temperature for 1.5 hours.



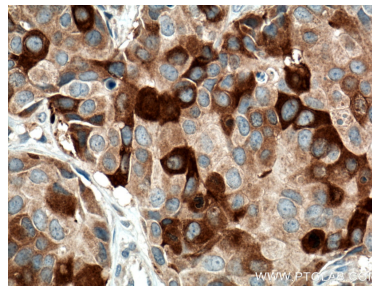
A431 cells were subjected to SDS PAGE followed by western blot with 10526-1-AP (RRM1 antibody) at dilution of 1:8000 incubated at room temperature for 1.5 hours.



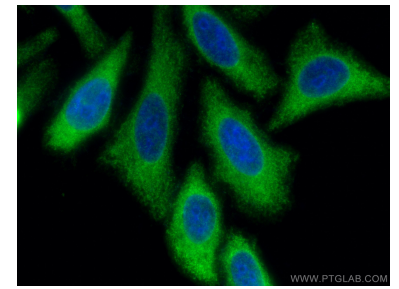
IP Result of anti-RRM1 (IP:10526-1-AP, 5ug; Detection:10526-1-AP 1:800) with K-562 cells lysate 8000ug.



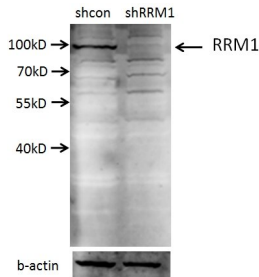
Immunohistochemical analysis of paraffin-embedded human breast cancer tissue slide using 10526-1-AP (RRM1 antibody) at dilution of 1:200 (under 10x lens. Heat mediated antigen retrieval with Tris-EDTA buffer (pH 9.0).



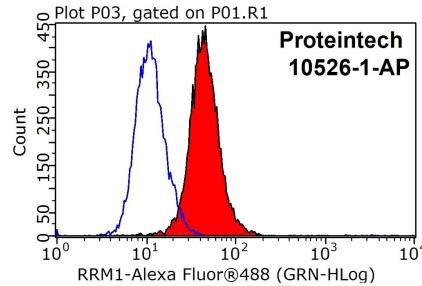
Immunohistochemical analysis of paraffin-embedded human breast cancer tissue slide using 10526-1-AP (RRM1 antibody) at dilution of 1:200 (under 40x lens. Heat mediated antigen retrieval with Tris-EDTA buffer (pH 9.0).



Immunofluorescent analysis of (-20°C Methanol) fixed HepG2 cells using RRM1 antibody (10526-1-AP) at dilution of 1:200 and CoraLite@488-Conjugated AffiniPure Goat Anti-Rabbit IgG(H+L).



A549 cells (shcontrol and shRNA of RRM1) were subjected to SDS PAGE followed by western blot with 10526-1-AP (RRM1 antibody) at dilution of 1:2000. .



1X10⁶ HeLa cells were stained with .2ug RRM1 antibody (10526-1-AP, red) and control antibody (blue). Cells were fixed with 4% PFA and permeabilized with 0.1% Triton X-100. Alexa Fluor 488-conjugated AffiniPure Goat Anti-Rabbit IgG(H+L) with dilution 1:1000.