

À des fins de recherche uniquement

Anticorps Polyclonal de lapin anti-Cathepsin H



Numéro de catalogue: 10315-1-AP

5 Publications

Informations de base

| | | |
|---|---|--|
| Numéro de catalogue: 10315-1-AP | Numéro d'acquisition GenBank: BC002479 | Méthode de purification: Purification par affinité contre l'antigène |
| Taille: 150ul, Concentration: 500 µg/ml by Nanodrop; | Identification du gène (NCBI): 1512 | Dilutions recommandées: WB 1:1000-1:6000 IHC 1:500-1:1000 IF 1:20-1:200 |
| Hôte: Lapin | Nom complet: cathepsin H | |
| Isotype: IgG | MW calculé: 41 kDa, 28 kDa | |
| Immunogen Catalog Number: AG0361 | MW observés: 28, 41 kDa | |

Applications

| | |
|---|---|
| Applications testées: IF, IHC, WB, ELISA | Contrôles positifs: WB : cellules A431, cellules HaCaT, cellules Raji, cellules U-937 IHC : tissu pulmonaire de souris, IF : cellules HepG2, |
| Demandes citées: FC, IHC, WB | |
| Spécificité de l'espèce: Humain, rat, souris | |
| Espèces citées: Humain, rat, souris | |

Remarque-IHC: il est suggéré de démasquer l'antigène avec un tampon de TE buffer pH 9,0; (*) À défaut, 'le démasquage de l'antigène peut être 'effectué avec un tampon citrate pH 6,0.

Informations générales

Cathepsin H (CTSH, synonyms: CPSB, MGC1519, minichain) is a lysosomal cysteine proteinase important in the overall degradation of lysosomal proteins. It is composed of a dimer of disulfide-linked heavy and light chains, both produced from a single protein precursor. This protein, which belongs to the peptidase C1 protein family, can act both as an aminopeptidase and as an endopeptidase. Increased expression of this gene has been correlated with malignant progression of prostate tumors. The observed 48 kDa form may be glycosylated CTSH.

Publications notables

| Autrice | Pubmed ID | Journal | Application |
|-----------------|-----------|------------------|-------------|
| Tomoka Hasegawa | 31271212 | Microscopy (Oxf) | IHC |
| Dali Han | 30728504 | Nature | FC |
| Wu S-M SM | 21217776 | Oncogene | IHC |

Stockage

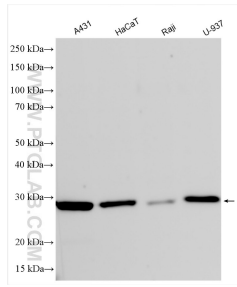
Stockage:
Stocker à -20°C. Stable pendant un an après l'expédition.
Tampon de stockage:
PBS avec azoture de sodium à 0,02 % et glycérol à 50 % pH 7,3
L'aliquotage n'est pas nécessaire pour le stockage à -20C

*** Les 20ul contiennent 0,1% de BSA.

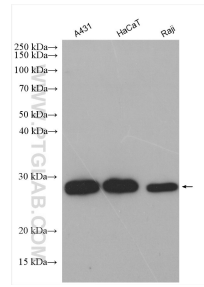
For technical support and original validation data for this product please contact:
T: 1 (888) 4PTGLAB (1-888-478-4522) (toll free in USA), or 1(312) 455-8498 (outside USA)
E: proteintech@ptglab.com
W: ptglab.com

This product is exclusively available under Proteintech Group brand and is not available to purchase from any other manufacturer.

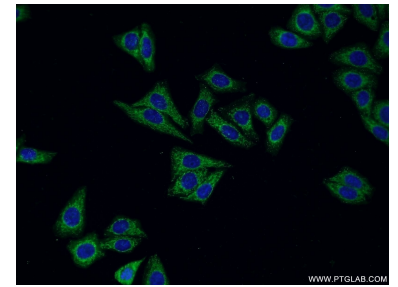
Données de validation sélectionnées



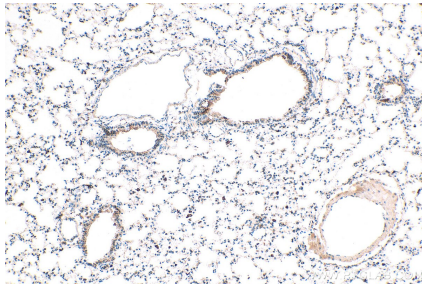
Various lysates were subjected to SDS PAGE followed by western blot with 10315-1-AP (Cathepsin H antibody) at dilution of 1:3000 incubated at room temperature for 1.5 hours.



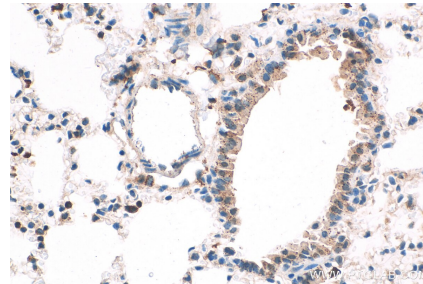
Various lysates were subjected to SDS PAGE followed by western blot with 10315-1-AP (Cathepsin H antibody) at dilution of 1:1500 incubated at room temperature for 1.5 hours.



Immunofluorescent analysis of HepG2 cells using 10315-1-AP (Cathepsin H antibody) at dilution of 1:50 and Alexa Fluor 488-conjugated AffiniPure Goat Anti-Rabbit IgG(H+L).



Immunohistochemical analysis of paraffin-embedded mouse lung tissue slide using 10315-1-AP (Cathepsin H antibody) at dilution of 1:1000 (under 10x lens). Heat mediated antigen retrieval with Tris-EDTA buffer (pH 9.0).



Immunohistochemical analysis of paraffin-embedded mouse lung tissue slide using 10315-1-AP (Cathepsin H antibody) at dilution of 1:1000 (under 40x lens). Heat mediated antigen retrieval with Tris-EDTA buffer (pH 9.0).