

Nur für Forschungszwecke

# CD1d Monoklonaler Antikörper

Katalog-Nr.: FITC-65242



## Allgemeine Informationen

<b>Katalog-Nr.:</b> FITC-65242	<b>GenBank-Zugangsnummer:</b> GeneID (NCBI): 12479	<b>Reinigungsmethode:</b> Affinitätsreinigung
<b>Größe:</b> 100ug , 500 µg/ml	<b>Vollständiger Name:</b> CD1d1 antigen	<b>CloneNo.:</b> 1B1
<b>Wirt:</b> Ratte		<b>Anregungs-/Emissionsmaxima-Wellenlängen:</b> 495 nm / 524 nm
<b>Isotyp:</b> IgG2b, kappa		

## Anwendungen

**Geprüfte Anwendungen:**  
FC  
**Getestete Reaktivität:**  
Maus

## Hintergrundinformationen

CD1d is a member of the CD1 family of transmembrane glycoproteins, which are structurally related to the major histocompatibility complex (MHC) proteins and form heterodimers with beta-2-microglobulin. CD1d is an antigen-presenting protein that binds self and non-self glycolipids and presents them to T-cell receptors on NKT cells. When activated, NKT cells rapidly produce Th1 and Th2 cytokines.

## Lagerung

**Lagerungsbedingungen:**  
Store at 2-8°C. Avoid exposure to light. Stable for one year after shipment.  
**Lagerungspuffer:**  
PBS with 0.09% sodium azide.

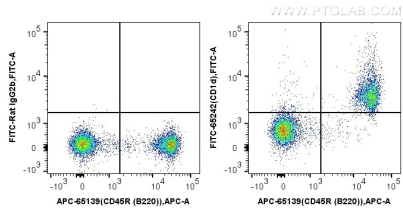
For technical support and original validation data for this product please contact:

T: 1 (888) 4PTGLAB (1-888-478-4522) (toll free in USA), or 1(312) 455-8498 (outside USA)

E: [proteintech@ptglab.com](mailto:proteintech@ptglab.com)  
W: [ptglab.com](http://ptglab.com)

**This product is exclusively available under Proteintech Group brand and is not available to purchase from any other manufacturer.**

## Ausgewählte Validierungsdaten



1X10<sup>6</sup> mouse splenocytes were surface stained with APC Anti-Mouse CD45R (B220) (APC-65139, Clone: RA3-6B2) and 0.5 ug FITC Plus Anti-Mouse CD1d (FITC-65242, Clone:1B1) or FITC Plus Rat IgG2b isotype control. Cells were not fixed.