

Nur für Forschungszwecke

CD2 Monoklonaler Antikörper

Katalog-Nr.:CR-65192



Allgemeine Informationen

Katalog-Nr.: CR-65192	GenBank-Zugangsnummer: BC033583	Reinigungsmethode: Affinitätsreinigung
Größe: 100tests , 5 µl/test	GeneID (NCBI): 914	CloneNo.: TS1/8
Wirt: Maus	Vollständiger Name: CD2 molecule	Anregungs-/Emissionsmaxima-Wellenlängen: 592 nm / 611 nm
Isotyp: IgG1, kappa	Berechnete Masse: 351 aa, 39 kDa	

Anwendungen

Geprüfte Anwendungen:
FC

Getestete Reaktivität:
Human

Hintergrundinformationen

CD2 is a cell surface glycoprotein present on a majority of thymocytes, all mature T cells and subset of NK cells but not on B lymphocytes. It is a pan T-cell marker. CD2 interacts with lymphocyte function-associated antigen (LFA-3/CD58) and CD48/BCM1 to mediate adhesion between T-cells and other cell types. CD2 is implicated in the triggering of T-cells, the cytoplasmic domain is implicated in the signaling function.

Lagerung

Lagerungsbedingungen:
Store at 2-8°C. Avoid exposure to light. Stable for one year after shipment.

Lagerungspuffer:
PBS with 0.09% sodium azide and 0.5% BSA.

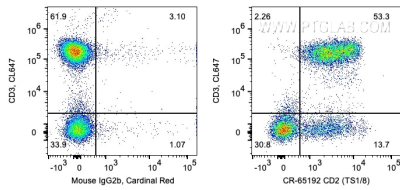
For technical support and original validation data for this product please contact:

T: 1 (888) 4PTGLAB (1-888-478-4522) (toll free in USA), or 1(312) 455-8498 (outside USA)

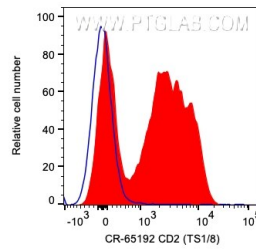
E: proteintech@ptglab.com
W: ptglab.com

This product is exclusively available under Proteintech Group brand and is not available to purchase from any other manufacturer.

Ausgewählte Validierungsdaten



1X10⁶ human PBMCs were surface co-stained with CL647 Anti-Human CD3 and 5 ul Cardinal Red™ Anti-Human CD2 (CR-65192, Clone:TS1/8) or Mouse IgG2b Isotype Control. Cells were not fixed. Lymphocytes were gated.



1X10⁶ human PBMCs were surface stained with 5 ul Cardinal Red™ Anti-Human CD2 (CR-65192, Clone:TS1/8) or Mouse IgG2b Isotype Control. Cells were not fixed. Lymphocytes were gated.