

Nur für Forschungszwecke

# CD103 Monoklonaler Antikörper

Katalog-Nr.: CL750-65047



## Allgemeine Informationen

<b>Katalog-Nr.:</b> CL750-65047	<b>GenBank-Zugangsnummer:</b> BC150690	<b>Reinigungsmethode:</b> Affinitätsreinigung
<b>Größe:</b> 100ug, 0.5 mg/ml	<b>GeneID (NCBI):</b> 16407	<b>CloneNo.:</b> 2E7
<b>Wirt:</b> hamster	<b>Vollständiger Name:</b> integrin alpha E, epithelial-associated	<b>Anregungs-/Emissionsmaxima-Wellenlängen:</b> 755 nm / 780 nm
<b>Isotyp:</b> IgG		

## Anwendungen

**Geprüfte Anwendungen:**  
FC

**Getestete Reaktivität:**  
Maus

## Hintergrundinformationen

CD103, also known as integrin alpha-E (ITGAE) or integrin alpha-IEL, is a type I transmembrane integrin protein that binds integrin beta 7 to form Integrin alpha-E beta-7 which is a receptor for E-cadherin and mediates adhesion of T lymphocytes to epithelial cells (PMID: 7969453; 8468482). CD103 is expressed on intraepithelial lymphocyte (IEL) T cells (both alpha/beta T cells and gamma/delta T cells), some peripheral regulatory T cells (Tregs), lamina propria T cells, and a subset of dendritic cells in the gut mucosa and mesenteric lymph nodes (PMID: 12242333; 15608520; 16216890).

## Lagerung

**Lagerungsbedingungen:**  
Store at 2-8°C. Avoid exposure to light. Stable for one year after shipment.

**Lagerungspuffer:**  
PBS with 0.09% sodium azide.

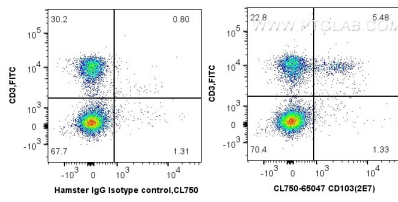
For technical support and original validation data for this product please contact:

T: 1 (888) 4PTGLAB (1-888-478-4522) (toll free in USA), or 1(312) 455-8498 (outside USA)

E: [proteintech@ptglab.com](mailto:proteintech@ptglab.com)  
W: [ptglab.com](http://ptglab.com)

**This product is exclusively available under Proteintech Group brand and is not available to purchase from any other manufacturer.**

## Ausgewählte Validierungsdaten



1X10<sup>6</sup> mouse splenocytes were surface co-stained with FITC Anti-Mouse CD3 and 0.5  $\mu$ g CoraLite® Plus 750 Anti-Mouse CD103 (CL750-65047, Clone: 2E7) or 0.5  $\mu$ g Isotype Control. Cells were not fixed.