

Nur für Forschungszwecke

CD1d Monoklonaler Antikörper

Katalog-Nr.:CL647-65242



Allgemeine Informationen

Katalog-Nr.: CL647-65242	GenBank-Zugangsnummer: GeneID (NCBI): 12479	Reinigungsmethode: Affinitätsreinigung
Größe: 100ug , 500 µg/mL	Vollständiger Name: CD1d1 antigen	CloneNo.: 1B1
Wirt: Ratte		Anregungs-/Emissionsmaxima-Wellenlängen: 654 nm / 674 nm
Isotyp: IgG2b, kappa		

Anwendungen

Geprüfte Anwendungen:
FC
Getestete Reaktivität:
Maus

Hintergrundinformationen

CD1d is a member of the CD1 family of transmembrane glycoproteins, which are structurally related to the major histocompatibility complex (MHC) proteins and form heterodimers with beta-2-microglobulin. CD1d is an antigen-presenting protein that binds self and non-self glycolipids and presents them to T-cell receptors on NKT cells. When activated, NKT cells rapidly produce Th1 and Th2 cytokines.

Lagerung

Lagerungsbedingungen:
Store at 2-8°C. Avoid exposure to light. Stable for one year after shipment.
Lagerungspuffer:
PBS with 0.09% sodium azide.

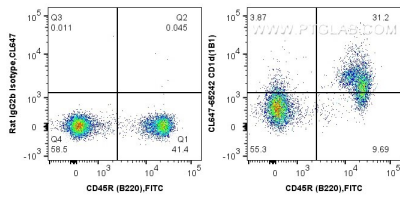
For technical support and original validation data for this product please contact:

T: 1 (888) 4PTGLAB (1-888-478-4522) (toll free in USA), or 1(312) 455-8498 (outside USA)

E: proteintech@ptglab.com
W: ptglab.com

This product is exclusively available under Proteintech Group brand and is not available to purchase from any other manufacturer.

Ausgewählte Validierungsdaten



1x10⁶ mouse splenocytes were surface stained with FITC Anti-Mouse CD45R (B220) (FITC-65139, Clone: RA3-6B2) and 1 ug CoraLite® Plus 647 Anti-Mouse CD1d (CL647-65242, Clone: 1B1) or CoraLite® Plus 647 conjugated rat IgG2b isotype control. Cells were not fixed.