

Nur für Forschungszwecke

CD62L Monoklonaler Antikörper

Katalog-Nr.:CL647-65219



Allgemeine Informationen

Katalog-Nr.: CL647-65219	GenBank-Zugangsnummer: BC052681	Reinigungsmethode: Protein-A-Reinigung
Größe: 100ug , 500 µg/ml	GeneID (NCBI): 20343	CloneNo.: MEL14
Wirt: Ratte	Vollständiger Name: selectin, lymphocyte	Anregungs-/Emissionsmaxima-Wellenlängen: 654 nm / 674 nm
Isotyp: IgG2a, kappa		

Anwendungen

Geprüfte Anwendungen:
FC

Getestete Reaktivität:
Maus

Hintergrundinformationen

CD62L, also known as L-selectin or SELL, is a member of the selectin family of adhesion molecules that also include CD62E (E-selectin) and CD62P (P-selectin) (PMID: 2663882, 2473156, 1382078). CD62L is a highly glycosylated protein of 95-105 kDa on neutrophils and 74 kDa on lymphocytes (PMID: 1382078; 1694883, 1695155). CD62L is expressed on the surface of most leukocytes, including lymphocytes, neutrophils, monocytes, eosinophils, hematopoietic progenitor cells, and immature thymocytes (PMID: 1694883, 1688580). It mediates the binding of lymphocytes to high endothelial venules (HEV) of peripheral lymph nodes through interactions with a constitutively expressed ligand, and is also involved in lymphocyte, neutrophil, and monocyte attachment to endothelium at sites of inflammation (PMID: 1382078).

Lagerung

Lagerungsbedingungen:
Store at 2-8°C. Avoid exposure to light. Stable for one year after shipment.

Lagerungspuffer:
PBS mit 0,1% Natriumazid und 0,5% BSA, pH 7,3.

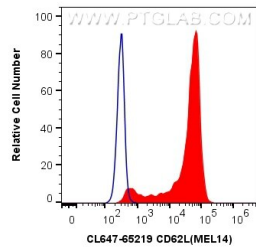
For technical support and original validation data for this product please contact:

T: 1 (888) 4PTGLAB (1-888-478-4522) (toll free in USA), or 1(312) 455-8498 (outside USA)

E: proteintech@ptglab.com
W: ptglab.com

This product is exclusively available under Proteintech Group brand and is not available to purchase from any other manufacturer.

Ausgewählte Validierungsdaten



1X10⁶ mouse splenocytes were surface stained with 0.5 ug CoraLite® Plus 647 Anti-Mouse CD62L (CL647-65219, Clone: MEL14) (red), or 0.5 ug Control Antibody. Cells were not fixed.