

Nur für Forschungszwecke

MICA/MICB Monoklonaler Antikörper

Katalog-Nr.:CL647-65161



Allgemeine Informationen

Katalog-Nr.:

CL647-65161

Größe:

100tests , 5 µl/test

Wirt:

Maus

Isotyp:

IgG2a, kappa

GenBank-Zugangsnummer:

BC016929

GeneID (NCBI):

4276

Vollständiger Name:

MHC class I polypeptide-related sequence A

Berechnete Masse:

383 aa, 43 kDa

Reinigungsmethode:

Mit Protein-A-

Affinitätschromatographie gereinigt

CloneNo.:

6D4

Anregungs-/Emissionsmaxima-

Wellenlängen:

654 nm / 674 nm

Anwendungen

Geprüfte Anwendungen:

FC

Getestete Reaktivität:

Human

Hintergrundinformationen

Human MHC class I chain-related genes located within the HLA class I region of chromosome 6 encode MHC class I chain-related A and B (MICA and MICB) (PMID: 11429322). MICA and MICB are stress-inducible surface molecules that are not associated with β 2-microglobulin and do not present peptides (PMID: 9497295). They are expressed in intestinal epithelium and many epithelial tumors (PMID: 10359807). MICA and MICB are ligands for NKG2D which is an activating receptor that is expressed on most natural killer (NK) cells, CD8 $\alpha\beta$ T cells, and $\gamma\delta$ T cells (PMID: 10426993; 11491531). The monoclonal antibody 6D4 recognizes MICA and MICB.

Lagerung

Lagerungsbedingungen:

Store at 2-8°C. Avoid exposure to light. Stable for one year after shipment.

Lagerungspuffer:

PBS with 0.09% sodium azide and 0.5% BSA.

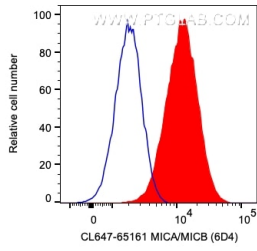
For technical support and original validation data for this product please contact:

T: 1 (888) 4PTGLAB (1-888-478-4522) (toll free in USA), or 1(312) 455-8498 (outside USA)

E: proteintech@ptglab.com
W: ptglab.com

This product is exclusively available under Proteintech Group brand and is not available to purchase from any other manufacturer.

Ausgewählte Validierungsdaten



1X10⁶ HeLa cells were surface stained with 5 ul CoraLite® Plus 647 Anti-Human MICA/MICB (CL647-65161, Clone: 6D4), or Mouse IgG2a Isotype Control. Cells were not fixed.