

Nur für Forschungszwecke

# CD45R (B220) Monoklonaler Antikörper

Katalog-Nr.:CL647-65139



## Allgemeine Informationen

Katalog-Nr.:

CL647-65139

Größe:

100ug, 0.5 mg/ml

Wirt:

Ratte

Isotyp:

IgG2a, kappa

GenBank-Zugangsnummer:

BC028512

GeneID (NCBI):

19264

Vollständiger Name:

protein tyrosine phosphatase, receptor type, C

Reinigungsmethode:

Affinitätsreinigung

CloneNo.:

RA3-6B2

Empfohlene Verdünnungen:

IF 1:200-1:800

Anregungs-/Emissionsmaxima-Wellenlängen:

654 nm / 674 nm

## Anwendungen

Geprüfte Anwendungen:

FC, IF

Getestete Reaktivität:

Human, Maus

Positivkontrollen:

IF : Maus-Splenozyten,

## Hintergrundinformationen

CD45, also known as protein tyrosine phosphatase, receptor type C, is a type I transmembrane protein expressed on the surface of all haematopoietic cells with the exception of erythrocytes and platelets (PMID: 3489673; 28615666). CD45 is a pan-haematopoietic cell marker and has been shown to be essential for T- and B-cell activation and signalling (PMID: 9429890; 16378097). CD45R (B220) is an isoform of CD45, expressed on murine B-lineage cells (except for plasma cells) and on a small sub-population of T cells (PMID: 6975314; 15712182). It is commonly used as a pan B-cell marker in mice. CD45R is also expressed on activated T cells and NK cell subsets (PMID: 7514808; 17923504). The RA3-6B2 clone reacts with human and mouse CD45R.

## Lagerung

Lagerungsbedingungen:

Store at 2-8°C. Avoid exposure to light. Stable for one year after shipment.

Lagerungspuffer:

PBS mit 0,1% Natriumazid und 0,5% BSA, pH 7,3.

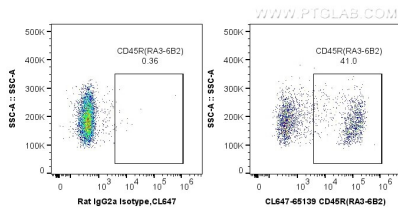
For technical support and original validation data for this product please contact:

T: 1 (888) 4PTGLAB (1-888-478-4522) (toll free in USA), or 1(312) 455-8498 (outside USA)

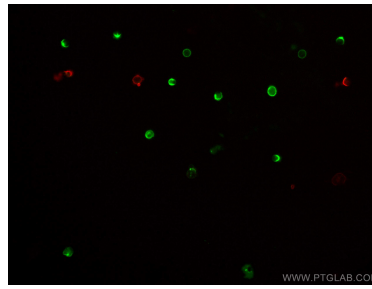
E: [proteintech@ptglab.com](mailto:proteintech@ptglab.com)  
W: [ptglab.com](http://ptglab.com)

This product is exclusively available under Proteintech Group brand and is not available to purchase from any other manufacturer.

## Ausgewählte Validierungsdaten



1X10<sup>6</sup> mouse splenocytes were surface stained with 0.5 ug Coralite® Plus 647 Anti-Mouse CD45R (B220) (CL647-65139, Clone:RA3-6B2), or 0.5 ug Control Antibody. Cells were not fixed.



Immunofluorescent analysis of mouse splenocytes using Coralite® Plus 647-conjugated CD45R (B220) antibody (CL647-65139, Clone: RA3-6B2, red) at dilution of 1:400, and Coralite® 488-conjugated CD3 antibody (CL488-65077, Clone: 17A2, green).