

Nur für Forschungszwecke

# CD8a Monoklonaler Antikörper

Katalog-Nr.:CL594-65180



## Allgemeine Informationen

**Katalog-Nr.:**

CL594-65180

**Größe:**

100ug, 0.5 mg/ml

**Wirt:**

Maus

**Isotyp:**

IgG1, kappa

**GenBank-Zugangsnummer:**

BC088126

**GeneID (NCBI):**

24930

**Vollständiger Name:**

CD8a molecule

**Reinigungsmethode:**

Mit Protein-A-

Affinitätschromatographie gereinigt

**CloneNo.:**

OX-8

**Anregungs-/Emissionsmaxima-**

**Wellenlängen:**

588 nm / 604 nm

## Anwendungen

**Geprüfte Anwendungen:**

FC

**Getestete Reaktivität:**

Ratte

## Hintergrundinformationen

CD8 is a transmembrane glycoprotein composed of two disulfide-linked chains. It can be present as a homodimer of CD8a or as a heterodimer of CD8a and CD8β (PMID: 3264320; 8253791). CD8 is found on most thymocytes. The majority of class I-restricted T cells express mostly the CD8aβ heterodimer while CD8aa homodimers alone have been found on some gut intraepithelial T cells, on some T cell receptor (TCR) γδ T cells and on NK cells (PMID: 2111591; 1831127; 8420975). CD8 acts as a co-receptor that binds to MHC class-I and participates in cytotoxic T cell activation (PMID: 8499079). During T cell development, CD8 is required for positive selection of CD4-/CD8+ T cells (PMID: 1968084).

## Lagerung

**Lagerungsbedingungen:**

Store at 2-8°C. Avoid exposure to light. Stable for one year after shipment.

**Lagerungspuffer:**

PBS with 0.09% sodium azide.

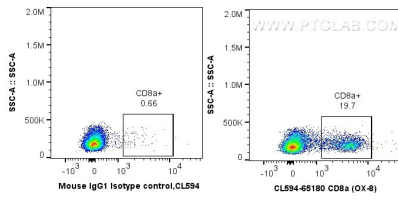
For technical support and original validation data for this product please contact:

T: 1 (888) 4PTGLAB (1-888-478-4522) (toll free in USA), or 1(312) 455-8498 (outside USA)

E: [proteintech@ptglab.com](mailto:proteintech@ptglab.com)  
W: [ptglab.com](http://ptglab.com)

This product is exclusively available under Proteintech Group brand and is not available to purchase from any other manufacturer.

## Ausgewählte Validierungsdaten



1x10<sup>6</sup> rat splenocytes were surface stained with 0.5 ug CoraLite®594 Anti-Rat CD8a (CL594-65180, Clone: OX-8) or 0.5 ug Isotype Control. Cells were not fixed.