

Nur für Forschungszwecke

CD25 Monoklonaler Antikörper

Katalog-Nr.:CL594-65137



Allgemeine Informationen

Katalog-Nr.: CL594-65137	GenBank-Zugangsnummer: BC114437	Reinigungsmethode: Affinitätsreinigung
Größe: 100ug, 0.5 mg/ml	GeneID (NCBI): 16184	CloneNo.: PC61.5
Wirt: Ratte	Vollständiger Name: interleukin 2 receptor, alpha chain	Anregungs-/Emissionsmaxima-Wellenlängen: 588 nm / 604 nm
Isotyp: IgG1, lambda		

Anwendungen

Geprüfte Anwendungen:
FC

Getestete Reaktivität:
Maus

Hintergrundinformationen

Proliferation of T lymphocytes is triggered by the interaction of IL-2 with its specific receptor following T lymphocyte activation. The receptor for IL-2 has three forms, generated by different combinations of three different proteins, the alpha chain (IL-2R alpha), the beta chain (IL-2R beta), and the gamma chain (IL-2R gamma) (PMID: 8476561). IL-2R alpha (also known as CD25) is a type I transmembrane protein present on activated T cells, activated B cells, some thymocytes, myeloid precursors, and oligodendrocytes. CD25 is also found on natural CD4⁺Foxp3⁺ Treg cells (PMID: 22585674).

Lagerung

Lagerungsbedingungen:
Store at 2-8°C. Avoid exposure to light. Stable for one year after shipment.

Lagerungspuffer:
PBS with 0.09% sodium azide.

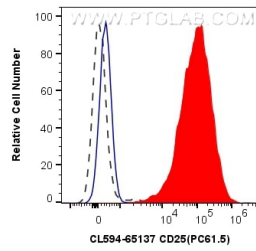
For technical support and original validation data for this product please contact:

T: 1 (888) 4PTGLAB (1-888-478-4522) (toll free in USA), or 1(312) 455-8498 (outside USA)

E: proteintech@ptglab.com
W: ptglab.com

This product is exclusively available under Proteintech Group brand and is not available to purchase from any other manufacturer.

Ausgewählte Validierungsdaten



1X10⁶ plate-bound Anti-CD3 and Anti-CD28 stimulated (red) or unstimulated (black dashed) mouse splenocytes were surface stained with 0.5 ug CoraLite®594 Anti-Mouse CD25 (CL594-65137, Clone: PC61.5), or 0.5 ug Isotype Control (blue). Cells were not fixed.