

Nur für Forschungszwecke

# CD103 Monoklonaler Antikörper

Katalog-Nr.:CL594-65047



## Allgemeine Informationen

**Katalog-Nr.:**

CL594-65047

**Größe:**

100ug, 0.5 mg/ml

**Wirt:**

hamster

**Isotyp:**

IgG

**GenBank-Zugangsnummer:**

BC150690

**GeneID (NCBI):**

16407

**Vollständiger Name:**

integrin alpha E, epithelial-associated

**Reinigungsmethode:**

Affinitätsreinigung

**CloneNo.:**

2E7

**Anregungs-/Emissionsmaxima-Wellenlängen:**

588 nm / 604 nm

## Anwendungen

**Geprüfte Anwendungen:**

FC

**Getestete Reaktivität:**

Maus

## Hintergrundinformationen

CD103, also known as integrin alpha-E (ITGAE) or integrin alpha-IEL, is a type I transmembrane integrin protein that binds integrin beta 7 to form Integrin alpha-E beta-7 which is a receptor for E-cadherin and mediates adhesion of T lymphocytes to epithelial cells (PMID: 7969453; 8468482). CD103 is expressed on intraepithelial lymphocyte (IEL) T cells (both alpha/beta T cells and gamma/delta T cells), some peripheral regulatory T cells (Tregs), lamina propria T cells, and a subset of dendritic cells in the gut mucosa and mesenteric lymph nodes (PMID: 12242333; 15608520; 16216890).

## Lagerung

**Lagerungsbedingungen:**

Store at 2-8°C. Avoid exposure to light. Stable for one year after shipment.

**Lagerungspuffer:**

PBS with 0.09% sodium azide.

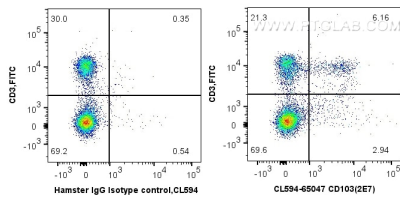
For technical support and original validation data for this product please contact:

T: 1 (888) 4PTGLAB (1-888-478-4522) (toll free in USA), or 1(312) 455-8498 (outside USA)

E: [proteintech@ptglab.com](mailto:proteintech@ptglab.com)  
W: [ptglab.com](http://ptglab.com)

**This product is exclusively available under Proteintech Group brand and is not available to purchase from any other manufacturer.**

## Ausgewählte Validierungsdaten



1X10<sup>6</sup> mouse splenocytes were surface co-stained with FITC Anti-Mouse CD3 and 0.5  $\mu$ g CoraLite@594 Anti-Mouse CD103 (CL594-65047, Clone: 2E7) or 0.5  $\mu$ g Isotype Control. Cells were not fixed.