

Nur für Forschungszwecke

CD3 Monoklonaler Antikörper

Katalog-Nr.:CL568-65077



Allgemeine Informationen

Katalog-Nr.:

CL568-65077

Größe:

100tests, 5 µl/test

Wirt:

Ratte

Isotyp:

IgG2b, kappa

GenBank-Zugangsnummer:

BC098236

GeneID (NCBI):

12501

Vollständiger Name:

CD3 antigen, epsilon polypeptide

Reinigungsmethode:

Affinitätsreinigung

CloneNo.:

17A2

Anregungs-/Emissionsmaxima-

Wellenlängen:

568 nm / 587 nm

Anwendungen

Geprüfte Anwendungen:

FC

Getestete Reaktivität:

Maus

Hintergrundinformationen

CD3 is a multimeric protein associated with the T-cell receptor (TCR) to form a complex involved in antigen recognition and signal transduction (PMID: 15885124). CD3 is composed of CD3 γ , δ , ϵ , and ζ chains (PMID: 1826255). It is expressed by thymocytes in a developmentally regulated manner, T cells, and some NK cells (PMID: 3289580). The TCR recognizes antigens bound to major histocompatibility complex (MHC) molecules. TCR-mediated peptide-MHC recognition is transmitted to the CD3 complex, leading to the intracellular signal transduction (PMID: 11985657).

Lagerung

Lagerungsbedingungen:

Store at 2-8°C. Avoid exposure to light. Stable for one year after shipment.

Lagerungspuffer:

PBS mit 0,1% Natriumazid und 0,5% BSA, pH 7,3.

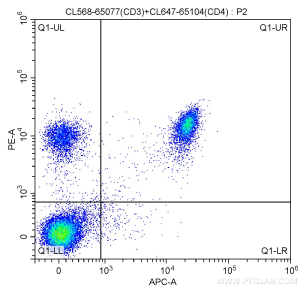
For technical support and original validation data for this product please contact:

T: 1 (888) 4PTGLAB (1-888-478-4522) (toll free in USA), or 1(312) 455-8498 (outside USA)

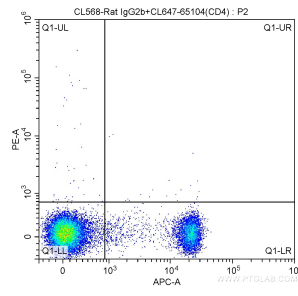
E: proteintech@ptglab.com
W: ptglab.com

This product is exclusively available under Proteintech Group brand and is not available to purchase from any other manufacturer.

Ausgewählte Validierungsdaten



1X10⁶ mouse splenocytes were surface stained with 5 ul CoraLite® Plus 647 Anti-Mouse CD4 (CL647-65104, Clone: GK1.5) and 5 ul CoraLite® 568 Anti-Mouse CD3 (CL568-65077, Clone:17A2). Cells were not fixed.



1X10⁶ mouse splenocytes were surface stained with 5 ul CoraLite® Plus 647 Anti-Mouse CD4 (CL647-65104, Clone: GK1.5) and CoraLite® 568-Rat IgG2b isotype control. Cells were not fixed.