

Nur für Forschungszwecke

IgG2b Isotype Control Monoklonaler Antikörper



Katalog-Nr.:CL555-65211

Allgemeine Informationen

Katalog-Nr.: CL555-65211	GenBank-Zugangsnummer: GeneID (NCBI):	Reinigungsmethode: N/A
Größe: 100ug, 0.5 mg/ml	Vollständiger Name:	CloneNo.: LTF-2
Wirt: Ratte		Anregungs-/Emissionsmaxima- Wellenlängen: 554 nm / 570 nm
Isotyp: IgG2b		

Anwendungen

Geprüfte Anwendungen:
FC
Getestete Reaktivität:

Hintergrundinformationen

The LTF-2 immunoglobulin is useful as an isotype-matched control. The LTF-2 immunoglobulin has an unknown binding specificity and is used as an isotype control for rat IgG2b antibodies. This antibody has been quality-tested for flow cytometry as negative control.

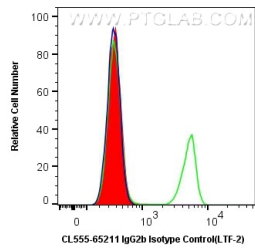
Lagerung

Lagerungsbedingungen:
Store at 2-8°C. Avoid exposure to light. Stable for one year after shipment.
Lagerungspuffer:
PBS with 0.09% sodium azide.

For technical support and original validation data for this product please contact:
T: 1 (888) 4PTGLAB (1-888-478-4522) (toll free in USA), or 1(312) 455-8498 (outside USA) E: proteintech@ptglab.com
W: ptglab.com

This product is exclusively available under Proteintech Group brand and is not available to purchase from any other manufacturer.

Ausgewählte Validierungsdaten



1X10⁶ BALB/c mouse splenocytes were surface stained with 0.5 ug CoraLite® Plus 555 Rat IgG2b Isotype Control (CL555-65211, Clone: LTF-2) (red), or 0.5 ug CoraLite® Plus 555 Anti-Mouse CD4 (green), or unstained (blue). Cells were not fixed.