

Nur für Forschungszwecke

# CD25 Monoklonaler Antikörper

Katalog-Nr.:CL555-65137



## Allgemeine Informationen

<b>Katalog-Nr.:</b> CL555-65137	<b>GenBank-Zugangsnummer:</b> BC114437	<b>Reinigungsmethode:</b> Affinitätsreinigung
<b>Größe:</b> 100ug, 0.5 mg/ml	<b>GeneID (NCBI):</b> 16184	<b>CloneNo.:</b> PC61.5
<b>Wirt:</b> Ratte	<b>Vollständiger Name:</b> interleukin 2 receptor, alpha chain	<b>Anregungs-/Emissionsmaxima-Wellenlängen:</b> 554 nm / 570 nm
<b>Isotyp:</b> IgG1, lambda		

## Anwendungen

**Geprüfte Anwendungen:**  
FC

**Getestete Reaktivität:**  
Maus

## Hintergrundinformationen

Proliferation of T lymphocytes is triggered by the interaction of IL-2 with its specific receptor following T lymphocyte activation. The receptor for IL-2 has three forms, generated by different combinations of three different proteins, the alpha chain (IL-2R alpha), the beta chain (IL-2R beta), and the gamma chain (IL-2R gamma) (PMID: 8476561). IL-2R alpha (also known as CD25) is a type I transmembrane protein present on activated T cells, activated B cells, some thymocytes, myeloid precursors, and oligodendrocytes. CD25 is also found on natural CD4<sup>+</sup>Foxp3<sup>+</sup> Treg cells (PMID: 22585674).

## Lagerung

**Lagerungsbedingungen:**  
Store at 2-8°C. Avoid exposure to light. Stable for one year after shipment.

**Lagerungspuffer:**  
PBS with 0.09% sodium azide.

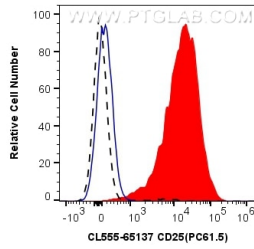
For technical support and original validation data for this product please contact:

T: 1 (888) 4PTGLAB (1-888-478-4522) (toll free in USA), or 1(312) 455-8498 (outside USA)

E: [proteintech@ptglab.com](mailto:proteintech@ptglab.com)  
W: [ptglab.com](http://ptglab.com)

**This product is exclusively available under Proteintech Group brand and is not available to purchase from any other manufacturer.**

## Ausgewählte Validierungsdaten



$1 \times 10^6$  plate-bound Anti-CD3 and Anti-CD28 stimulated (red) or unstimulated (black dashed) mouse splenocytes were surface stained with 0.5  $\mu$ g CoraLite® Plus 555 Anti-Mouse CD25 (CL555-65137, Clone: PC61.5), or 0.5  $\mu$ g Isotype Control (blue). Cells were not fixed.