

Nur für Forschungszwecke

RAB39B Monoklonaler Antikörper

Katalog-Nr.:CL488-68014



Allgemeine Informationen

Katalog-Nr.: CL488-68014	GenBank-Zugangsnummer: BC009714	Reinigungsmethode: Protein-A-Reinigung
Größe: 100ul , Konzentration: 1000 µg/ml von116442	GeneID (NCBI): 116442	CloneNo.: 2F4F7
Nanodrop;	Vollständiger Name: RAB39B, member RAS oncogene family	Anregungs-/Emissionsmaxima-Wellenlängen: 493 nm / 522 nm
Wirt: Maus	Berechnete Masse: 213 aa, 25 kDa	
Isotyp: IgG2b	Beobachtete Masse: 25 kDa	
Immunogen Katalognummer: AG27170		

Anwendungen

Geprüfte Anwendungen:
FC (Intra)

Getestete Reaktivität:
Hausschwein, Human, Kaninchen, Maus, Ratte

Hintergrundinformationen

RAB39B is a member of the RAB GTPase family with a putative role in vesicle trafficking. RAB39B is predominantly expressed in neuronal cells and is localized to the endoplasmic reticulum, Golgi and trans-Golgi recycling endosomes. Several reports suggested that RAB39B may regulate protein trafficking and the PI3K-AKT-mTOR pathway. Mutations in RAB39B are known to be associated with X-linked intellectual disability (XLID), Parkinson's disease, and autism.

Lagerung

Lagerungsbedingungen:
Bei -20°C lagern. Vor Licht schützen. Nach dem Versand ein Jahr stabil.

Lagerungspuffer:
BS mit 50% Glycerin, 0,05% Proclin300, 0,5% BSA, pH 7,3.

Aliquotieren ist nicht notwendig bei -20°C Lagerung

***** 20ul-Größen enthalten 0.1% BSA**

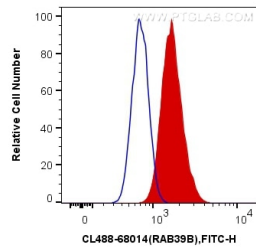
For technical support and original validation data for this product please contact:

T: 1 (888) 4PTGLAB (1-888-478-4522) (toll free in USA), or 1(312) 455-8498 (outside USA)

E: proteintech@ptglab.com
W: ptglab.com

This product is exclusively available under Proteintech Group brand and is not available to purchase from any other manufacturer.

Ausgewählte Validierungsdaten



1X10⁶ SH-SY5Y cells were intracellularly stained with 0.4 µg CoraLite® Plus 488 Anti-Human RAB39B (CL488-68014, Clone:2F4F7) (red), or 0.4 µg Control Antibody. Cells were fixed with 4% PFA and permeabilized with Flow Cytometry Perm Buffer (PF00011-C).