

Nur für Forschungszwecke

PSMB5 Monoklonaler Antikörper

Katalog-Nr.:CL488-67959



Allgemeine Informationen

Katalog-Nr.: CL488-67959	GenBank-Zugangsnummer: BC057840	Reinigungsmethode: Protein-A-Reinigung
Größe: 100ul , Konzentration: 1000 µg/ml von5693 Nanodrop;	GeneID (NCBI): 5693	CloneNo.: 2E9H1
Wirt: Maus	Vollständiger Name: proteasome (prosome, macropain) subunit, beta type, 5	Anregungs-/Emissionsmaxima- Wellenlängen: 493 nm / 522 nm
Isotyp: IgG2a	Berechnete Masse: 263 aa, 28 kDa	
Immunogen Katalognummer: AG5828	Beobachtete Masse: 22 kDa	

Anwendungen

Geprüfte Anwendungen:
FC (Intra)

Getestete Reaktivität:
Human

Hintergrundinformationen

PSMB5(Proteasome subunit beta type-5) is also named as LMPX, MB1, X and belongs to the peptidase T1B family.The proteasome is a multicatalytic proteinase complex which is characterized by its ability to cleave peptides with Arg, Phe, Tyr, Leu, and Glu adjacent to the leaving group at neutral or slightly basic pH.RNAi-mediated silencing of.It has 2 isoforms produced by alternative splicing.

Lagerung

Lagerungsbedingungen:
Bei -20°C lagern. Vor Licht schützen. Nach dem Versand ein Jahr stabil.

Lagerungspuffer:
BS mit 50% Glycerin, 0,05% Proclin300, 0,5% BSA, pH 7,3.

Aliquotieren ist nicht notwendig bei -20°C Lagerung

*** 20ul-Größen enthalten 0.1% BSA

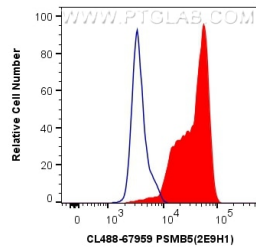
For technical support and original validation data for this product please contact:

T: 1 (888) 4PTGLAB (1-888-478-4522) (toll free
in USA), or 1(312) 455-8498 (outside USA)

E: proteintech@ptglab.com
W: ptglab.com

This product is exclusively available under Proteintech Group brand and is not available to purchase from any other manufacturer.

Ausgewählte Validierungsdaten



1×10^6 HeLa cells were intracellularly stained with 0.4 μ g CoraLite® Plus 488 Anti-Human PSMB5 (CL488-67959, Clone: 2E9H1) (red), or 0.4 μ g Mouse IgG2a Isotype Control (CL488-66360-2, Clone: K11A1B2A2) (blue). Cells were fixed and permeabilized with Transcription Factor Staining Buffer Kit (PF00011).