

Nur für Forschungszwecke

TUFM Monoklonaler Antikörper

Katalog-Nr.:CL488-67802



Allgemeine Informationen

Katalog-Nr.: CL488-67802	GenBank-Zugangsnummer: BC010041	Reinigungsmethode: Protein-A-Reinigung
Größe: 100ul , Konzentration: 1000 µg/ml von7284 Nanodrop;	GeneID (NCBI): 2A10D2	CloneNo.: 2A10D2
Wirt: Maus	Vollständiger Name: Tu translation elongation factor, mitochondrial	Empfohlene Verdünnungen: IF 1:50-1:500
Isotyp: IgG2a	Berechnete Masse: 50 kDa	Anregungs-/Emissionsmaxima- Wellenlängen: 493 nm / 522 nm
Immunogen Katalognummer: AG24976		

Anwendungen

Geprüfte Anwendungen: FC (Intra), IF	Positivkontrollen: IF : HepG2-Zellen,
Getestete Reaktivität: Human, Maus, Ratte	

Hintergrundinformationen

TUFM, also named as Elongation factor Tu, mitochondrial, is a 452 amino acid protein, which contains 1 tr-type G (guanine nucleotide-binding) domain and belongs to the TRAFAC class translation factor GTPase superfamily. TUFM localizes in the Mitochondrion and promotes the GTP-dependent binding of aminoacyl-tRNA to the A-site of ribosomes during protein biosynthesis.

Lagerung

Lagerungsbedingungen:
Bei -20°C lagern. Vor Licht schützen. Nach dem Versand ein Jahr stabil.
Lagerungspuffer:
BS mit 50% Glycerin, 0,05% Proclin300, 0,5% BSA, pH 7,3.
Aliquotieren ist nicht notwendig bei -20°C Lagerung

***** 20ul-Größen enthalten 0.1% BSA**

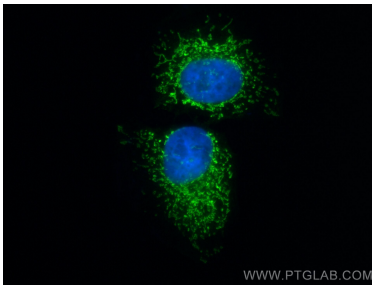
For technical support and original validation data for this product please contact:

T: 1 (888) 4PTGLAB (1-888-478-4522) (toll free
in USA), or 1(312) 455-8498 (outside USA)

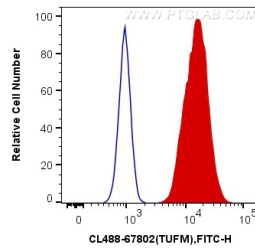
E: proteintech@ptglab.com
W: ptglab.com

This product is exclusively available under Proteintech Group brand and is not available to purchase from any other manufacturer.

Ausgewählte Validierungsdaten



Immunofluorescent analysis of (4% PFA) fixed HepG2 cells using CoraLite® Plus 488 TUFM antibody (CL488-67802, Clone: 2A10D2) at dilution of 1:200.



1X10⁶ HepG2 cells were intracellularly stained with 0.4 ug CoraLite® Plus 488 Anti-Human TUFM (CL488-67802, Clone:2A10D2) (red), or 0.4 ug Mouse IgG2b Isotype Control (CL488-66360-3, Clone: K11B8C4B5) (blue). Cells were fixed with 4% PFA and permeabilized with Flow Cytometry Perm Buffer (PF00011-C).