

Nur für Forschungszwecke

CD45R (B220) Monoklonaler Antikörper

Katalog-Nr.:CL488-65139



Allgemeine Informationen

Katalog-Nr.: CL488-65139	GenBank-Zugangsnummer: BC028512	Reinigungsmethode: Affinitätsreinigung
Größe: 100tests , 5 µl/test	GeneID (NCBI): 19264	CloneNo.: RA3-6B2
Wirt: Ratte	Vollständiger Name: protein tyrosine phosphatase, receptor type, C	Empfohlene Verdünnungen: IF 1:200-1:800
Isotyp: IgG2a, kappa		Anregungs-/Emissionsmaxima-Wellenlängen: 493 nm / 522 nm

Anwendungen

Geprüfte Anwendungen: FC, IF	Positivkontrollen: IF : Maus-Splenozyten,
Getestete Reaktivität: Human, Maus	

Hintergrundinformationen

CD45, also known as protein tyrosine phosphatase, receptor type C, is a type I transmembrane protein expressed on the surface of all haematopoietic cells with the exception of erythrocytes and platelets (PMID: 3489673; 28615666). CD45 is a pan-haematopoietic cell marker and has been shown to be essential for T- and B-cell activation and signalling (PMID: 9429890; 16378097). CD45R (B220) is an isoform of CD45, expressed on murine B-lineage cells (except for plasma cells) and on a small sub-population of T cells (PMID: 6975314; 15712182). It is commonly used as a pan B-cell marker in mice. CD45R is also expressed on activated T cells and NK cell subsets (PMID: 7514808; 17923504). The RA3-6B2 clone reacts with human and mouse CD45R.

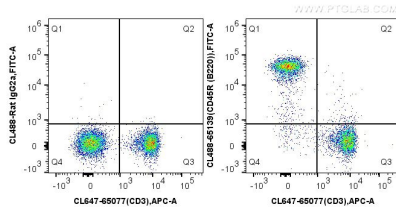
Lagerung

Lagerungsbedingungen:
Store at 2-8°C. Avoid exposure to light. Stable for one year after shipment.
Lagerungspuffer:
PBS mit 0,1% Natriumazid und 0,5% BSA, pH 7,3.

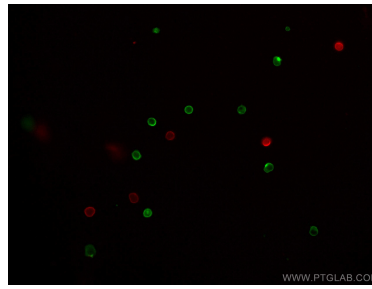
For technical support and original validation data for this product please contact:
T: 1 (888) 4PTGLAB (1-888-478-4522) (toll free in USA), or 1(312) 455-8498 (outside USA) E: proteintech@ptglab.com
W: ptglab.com

This product is exclusively available under Proteintech Group brand and is not available to purchase from any other manufacturer.

Ausgewählte Validierungsdaten



1X10⁶ C57BL/6 mouse splenocytes were surface stained with 5 ul CoraLite® Plus 647 Anti-Mouse CD3 (17A2) (CL647-65077, Clone: 17A2) and CoraLite® Plus 488-conjugated Rat IgG2a isotype control (left) or 5 ul CoraLite® Plus 488 Anti-Mouse CD45R (B220) (CL488-65139, Clone: RA3-6B2) (right). Cells were not fixed.



Immunofluorescent analysis of mouse splenocytes using CoraLite® Plus 488-conjugated CD45R (B220) antibody (CL488-65139, Clone: RA3-6B2, green) at dilution of 1:400, and CoraLite® Plus 647-conjugated CD3 antibody (CL647-65077, Clone: 17A2, red).