

Nur für Forschungszwecke

GLI2-Specific Polyklonaler Antikörper



Katalog-Nr.:CL488-18989

Vorgestelltes Produkt

Allgemeine Informationen

Katalog-Nr.:

CL488-18989

Größe:

100ul , Konzentration: 1000 µg/ml von14633

Nanodrop;

Wirt:

Kaninchen

Isotyp:

IgG

GenBank-Zugangsnummer:

NM_001081125

GeneID (NCBI):

von14633

Vollständiger Name:

GLI-Kruppel family member GLI2

Berechnete Masse:

168 kDa

Beobachtete Masse:

167 kDa 88 kDa

Reinigungsmethode:

Antigen-Affinitätsreinigung

Anregungs-/Emissionsmaxima-

Wellenlängen:

493 nm / 522 nm

Anwendungen

Geprüfte Anwendungen:

FC (Intra)

Getestete Reaktivität:

Human, Maus, Ratte

Hintergrundinformationen

GLI2, also named as THP, belongs to the GLI C2H2-type zinc-finger protein family. GLI2 play a role during embryogenesis. It binds to the DNA sequence 5'-GAACCACCA-3' which is part of the TRE-2S regulatory element that augments the Tax-dependent enhancer of human T-cell leukemia virus type 1. It is implicated in the transduction of SHH signal. Mutation of GLI2 will cause of holoprosencephaly type 9 (HPE9). Four possible isoforms (hGli2a, b, g, and d) are formed by combinations of two independent alternative splicings, and all the isoforms could bind to a DNA motif, TRE2S. hGli2 a, b, g, and d. These isoforms encode 133-, 131-, 88-, and 86-kDa proteins, respectively.

Lagerung

Lagerungsbedingungen:

Bei -20°C lagern. Vor Licht schützen.

Lagerungspuffer:

BS mit 50% Glycerin, 0,05% Proclin300, 0,5% BSA, pH 7,3.

Aliquotieren ist nicht notwendig bei -20°C Lagerung

*** 20ul-Größen enthalten 0.1% BSA

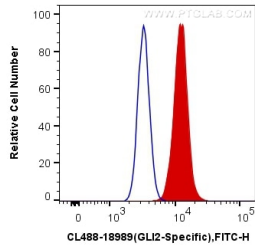
For technical support and original validation data for this product please contact:

T: 1 (888) 4PTGLAB (1-888-478-4522) (toll free in USA), or 1(312) 455-8498 (outside USA)

E: proteintech@ptglab.com
W: ptglab.com

This product is exclusively available under Proteintech Group brand and is not available to purchase from any other manufacturer.

Ausgewählte Validierungsdaten



1X10⁶ HepG2 cells were intracellularly stained with 0.4 ug CoraLite® Plus 488 Anti-Mouse GLI2-Specific (CL488-18989) (red), or 0.4 ug Control Antibody. Cells were fixed and permeabilized with Transcription Factor Staining Buffer Kit (PF00011).