

Nur für Forschungszwecke

# CD11a Monoklonaler Antikörper

Katalog-Nr.:CL405-65177



## Allgemeine Informationen

**Katalog-Nr.:**

CL405-65177

**Größe:**

100ug, 0.5 mg/ml

**Wirt:**

Ratte

**Isotyp:**

IgG2a, kappa

**GenBank-Zugangsnummer:**

BC145802

**GeneID (NCBI):**

16408

**Vollständiger Name:**

integrin alpha L

**Reinigungsmethode:**

Mit Protein-A-

Affinitätschromatographie gereinigt

**CloneNo.:**

M17/4

**Anregungs-/Emissionsmaxima-**

**Wellenlängen:**

399 nm / 422 nm

## Anwendungen

**Geprüfte Anwendungen:**

FC

**Getestete Reaktivität:**

Maus

## Hintergrundinformationen

CD11a, also known as integrin  $\alpha$ L or LFA-1 $\alpha$ , is a 170-180 kDa transmembrane glycoprotein that forms a heterodimer with CD18 (PMID: 7027264; 1672643). CD11a/CD18 (LFA-1) is expressed by all leukocytes and mediates cell adhesion through interactions with its ligands, intercellular adhesion molecule 1 (ICAM-1), ICAM-2, and ICAM-3 (PMID: 7479767). CD11a/CD18 also functions in lymphocyte costimulatory signaling (PMID: 1972160).

## Lagerung

**Lagerungsbedingungen:**

Store at 2-8°C. Avoid exposure to light. Stable for one year after shipment.

**Lagerungspuffer:**

PBS with 0.09% sodium azide.

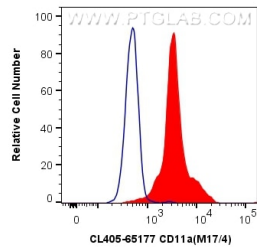
For technical support and original validation data for this product please contact:

T: 1 (888) 4PTGLAB (1-888-478-4522) (toll free in USA), or 1(312) 455-8498 (outside USA)

E: [proteintech@ptglab.com](mailto:proteintech@ptglab.com)  
W: [ptglab.com](http://ptglab.com)

**This product is exclusively available under Proteintech Group brand and is not available to purchase from any other manufacturer.**

## Ausgewählte Validierungsdaten



1X10<sup>6</sup> mouse splenocytes were surface stained with 0.5 ug CoraLite® Plus 405 Anti-Mouse CD11a (CL405-65177, Clone: M17/4) (red), or 0.5 ug Control Antibody. Cells were not fixed.